



**TAURAS·FENIX**  
MACHINERY WORKS



Located in Saint-Petersburg, Russia  
Total facility area: 25 000 sq.mt

TAURAS-FENIX is the most prominent and influential manufacturer of filling and packaging equipment in Russia, the CIS region and the Baltic States.

Our customer portfolio includes more than 1500 manufacturers of food and non-food products all over the world, from SMEs to multi-national corporations. Equipment made by TAURAS-FENIX is a result of continuous technologic development from 1987, and meets the highest international quality and safety standards. Our range includes more than 200 models of packaging, filling, dosing, and processing machines spanning across 13 divisions.

TAURAS-FENIX is a famous and celebrated machinery brand. It stands for innovation, reliability, competence, high quality, flexibility and dynamic development.

## TAURAS-FENIX occupies up to

**95%** of salt packaging market

**60%** of dairy packaging market

**35%** of grocery packaging market

### MAIN INDUSTRIES:

Dairy products  
Bakery and confectionery  
Grocery  
Snacks, oils and fats  
Fruit and vegetables  
Drinking water

Meat, fish, frozen products  
Household chemicals and construction materials  
Petfood  
Transport and secondary packaging  
Integrated solutions





## PACKAGING EQUIPMENT PRODUCTION

Packaging and filling equipment made by TAURAS-FENIX combines high performance, operational flexibility, outstanding quality, and low usage and maintenance cost. Capability of the company to design and execute projects at the at the highest technological level is ensured by world-class production facility.

TAURAS-FENIX occupies a production area of more than 25 000 sq.m. This includes 4 assembly departments, an advanced metal processing division with more than 300 units of modern machine-tools, as well as R&D and engineering, experimental range and an in-house galvanic works.

The quality and reliability of the machines are guaranteed by the approach of maximizing in-house production, while outsourcing only pneumatic, electronic, and auxiliary components. This allows for timely detection of any manufacturing flaw and an ability to make rapid adjustments at any production step, avoiding interruptions in the assembly process.

Annually, TAURAS-FENIX launches more than 1500 packaging machines.

## PACKAGING EQUIPMENT PRODUCTION PROCESS

1. ENGINEERING, PREPARATION OF DETAILED PROJECT DOCUMENTATION
2. PRIMARY METAL PROCESSING AND ASSEMBLY
3. QUALITY CHECK
4. PRIMARY TESTING
5. PACKAGING AND SHIPPING
6. INSTALLATION, COMMISSIONING, AND LAUNCHING AT THE PREMISES











# DAIRY PRODUCTS

**TAURAS·FENIX**  
MACHINERY WORKS

Milk



Kefir



Sour cream



Fermented milk



Stained cream



Cream



Cottage cheese



Yoghurt



Butter



Cheese



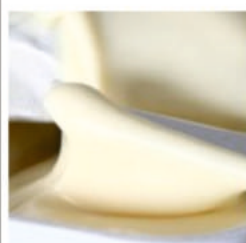
Fats



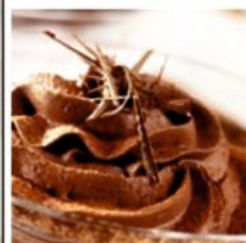
Condensed milk



Processed cheese



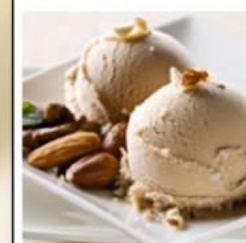
Spreads



Glazed snacks



Ice cream



Milk powder





Cupfillers



Kinematic speed:  
30-210 ppm

Filling lines



Kinematic speed:  
1000-6000 bph

Film bag fillers



Kinematic speed:  
25-100 ppm

Gable top filling lines



Kinematic speed:  
2000-6000 pph



# BREAD AND CONFECTIONARY PRODUCTS

Bread



Baguette



Crisps



Pies



Chucks



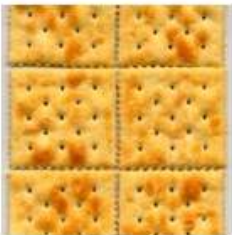
Pizza



Straws



Crackers



Croissants



Bagels



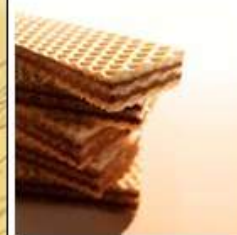
Spiced cakes



Profiteroles



Waffles



Cookies



Muffins



Donuts



Oriental sweets



Chocolate sweets



Lollipops



Marmalade



Chewing sweets



Marshmallows



Meringues



Honey



Jam



Chocolate spreads





## Depositing machines



Kinematic speed:  
up to 900 kg/h

Kinematic speed:  
up to 300 kg/h

Kinematic speed:  
up to 600 kg/h

Kinematic speed:  
up to 150-250 kg/h

# PACKAGING EQUIPMENT

Flow-wrappers



Kinematic speed:  
up to 25-300 ppm

VFFS and inclined



Kinematic speed:  
up to 25-130 ppm

Cupfillers



Kinematic speed:  
up to 30-210 ppm

Doy-pack



Kinematic speed:  
up to 50 ppm

Clipping



Kinematic speed:  
up to 30 ppm



Tea



Coffee beans powder



Cacao



Succory



Sugar



Salt



Spices



Soda



Starches



Milk powder



Flour



Cereals



Pasta



Dry breakfasts



Granola and muesli





VFFS



Briquette machine



Filling lines



Packaging into  
cardboards



Doy-pack



Kinematic speed:  
up to 140 ppm

Kinematic speed:  
up to 140 ppm

Kinematic speed:  
up to 3000 bph

Kinematic speed:  
up to 25 ppm.

Kinematic speed:  
up to 50 ppm



# SNACKS, OILS, SPREADS

Chips



Straws



Chucks



Seeds



Nuts



Dried fruits



Candied fruits



Chocolate bars



Meat snacks



Fish snacks



Edible oils



Mayonnaise



Mustard



Soy sauce



Ketchup



Tomato paste



Sauces



VFFS inclined



Kinematical speed:  
25-130 ppm

Cup fillers



Kinematical speed:  
30-210 ppm

Doyp-pack



Kinematical speed:  
20-50 ppm



# FRUITS AND VEGETABLES

Fresh fruits, vegetables,  
greenery



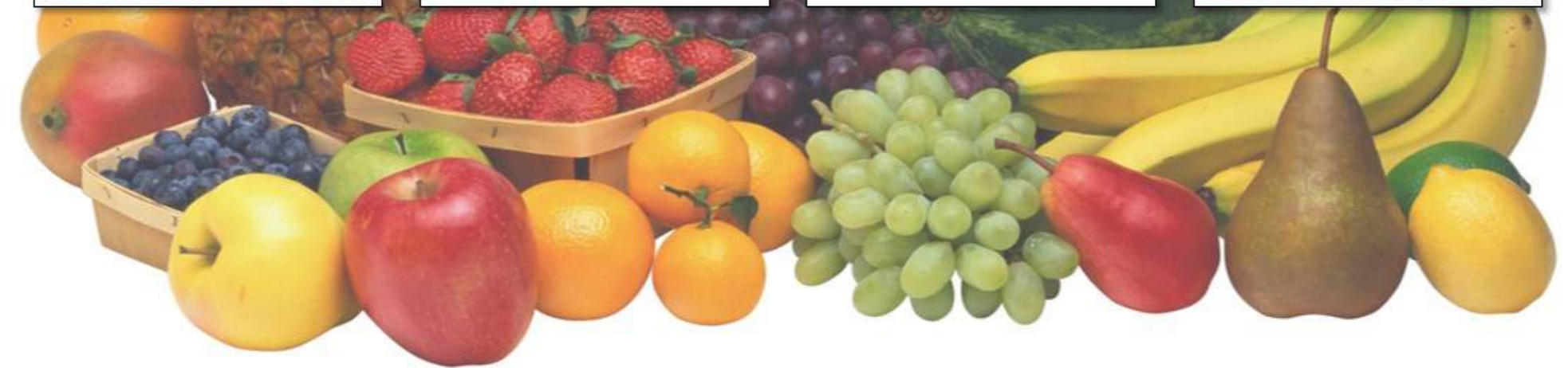
Canned vegetables



Frozen vegetables



Frozen fruits



HFFS



Kinematic speed:  
up to 65 ppm

VFFS



Kinematic speed:  
up to 25 ppm



# MEAT, FISH, FROZEN PRODUCTS

**TAURAS·FENIX**  
MACHINERY WORKS

Chilled meat



Mince meat



Delicatessen



Sausages



Paste



Ready to cook meat



Pelmeni



Chilled fish



Fish preserves



Canned fish



Ready to cook fish



Caviar



Frozen food



Jars and cupfillers



Kinematic speed:  
up to 25 ppm

VFFS



Kinematic speed: up to 25-130 ppm



# HOUSEHOLD CHEMICALS AND CONSTRUCTION MATERIALS

**TAURAS·FENIX**  
MACHINERY WORKS

Creams, Lotions,  
Care Products



Shampoos, Gels,  
Conditioners



Liquid soap



Bath salts



Bath foam



Washing powders



Detergents



Related products



Car chemical



Construction materials



Paints



Heavy and large items



Vertical machines



Kinematical speed:  
250-990 kg/min

Cup fillers



Kinematical speed:  
25-300 ppm

Doy-pack



Kinematical speed:  
\30-120 ppm

Flow-wrappers



Kinematical speed:  
30-210 ppm

Turbopacks



Kinematical speed:  
30 max



# PACKAGING INTO CARDBOARD

Case erector



Packaging into boxes



Packaging into  
cardboards



Tray packer



Case  
sealing



# SECONDARY TRANSPORT PACKAGING

Shrink wrapping machines

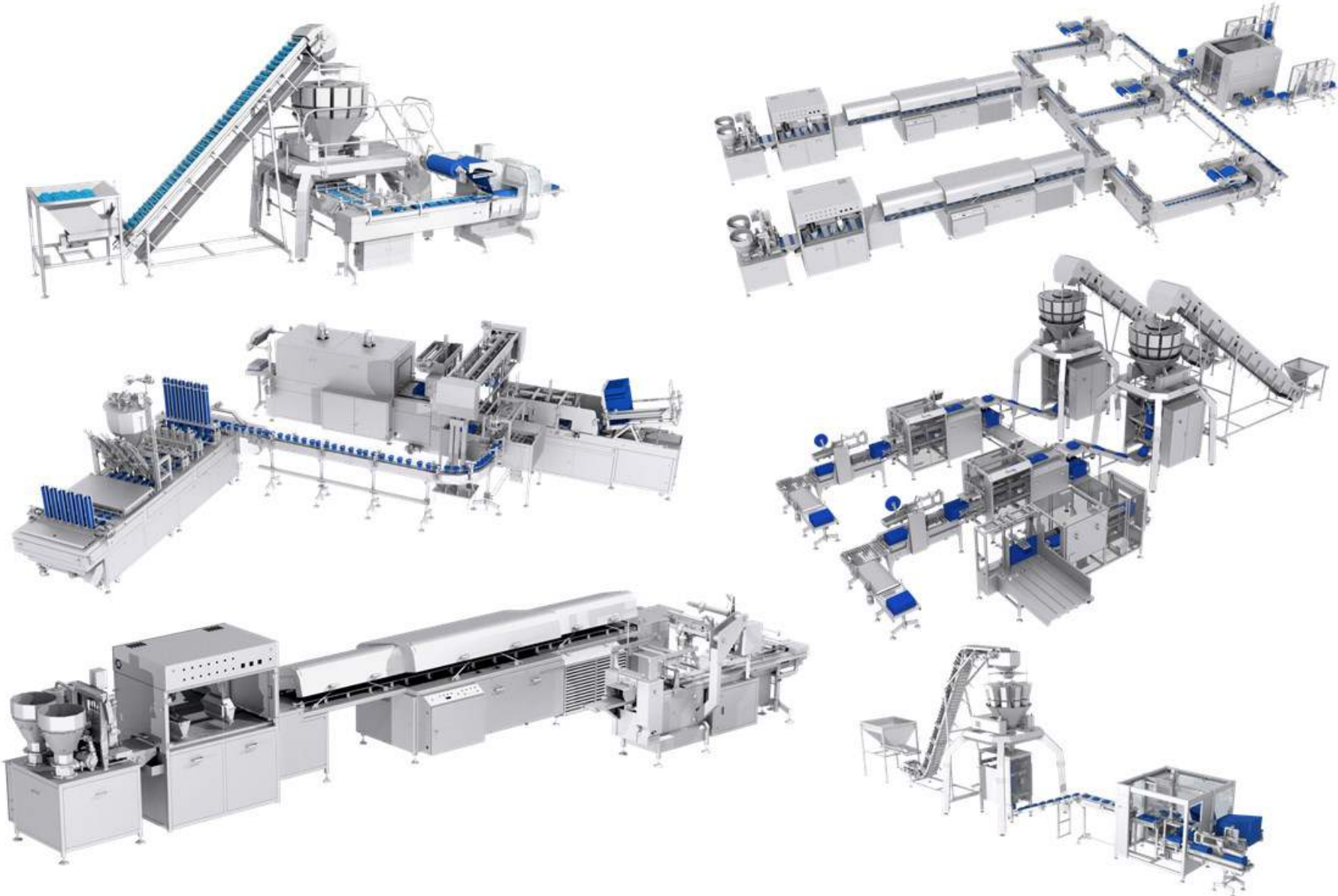
Pallette streching





# INTEGRATED SOLUTIONS

**TAURAS·FENIX**  
MACHINERY WORKS



# Case study: complete filling line for fresh dairy products

Client: PepsiCo

Region: Uzbekistan

Output: 6'000 PET bottles per hour, up to 40'000'000 bottles per year: \$20 mn  
in revenues at \$0.5 per bottle Shelf life: 14-21 days with fresh pasteurized milk, 30-45 days with yoghurts

Line composition: Blow molding machine; Air conveyor; Filling machine; Lamellar conveyor; Roll-fed labeler;  
Shrink wrapper; Preform loader; Sleeve labeler; Condensate remover.

## TRIBLOCK 6000

Triblock 6000 is designed for continuous automatic filling of still liquids into PET bottles.

Ultra Clean (VDMA class IV) implementation of the machine is a perfect solution for fresh pasteurized milk, yoghurts with(out) inclusions up to 10 mm, sour milk etc.

Triblock performs the following operations:

### Rinsing

- One-stage with ozonated water
- Two-stage with hydrogen peroxide/peracetic acid and sterile water

### Filling

- By weight with load cells
- By volume with flowmetric sensors

### Capping

- Regular plastic cap
- Plastic cap with aluminium insert for induction sealing

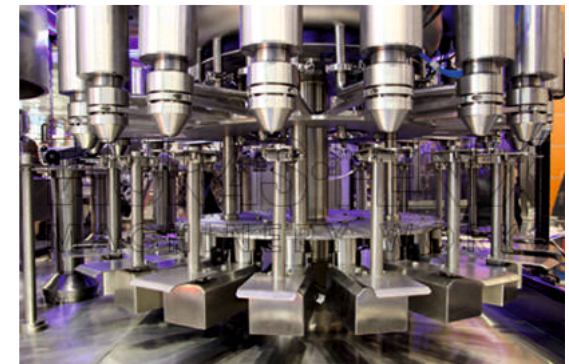




# Case study: complete filling line for fresh dairy products

Client: PepsiCo  
Region: Uzbekistan

Kinematical speed, max, cycles/min	6000
Dose volume, min, l	0,1
Dose volume, max, l	2
Bottle height, mm	275
Bottle diameter, mm	100
Filling nozzles number, pcs	20
Hopper volume, l	200
Power consumption, kW	10
Air consumption, l/min	80
Machine length, not more than, mm	3900
Machine width, not more than, mm	2200
Machine height, not more than, mm	3500
Machine weight, not more than, mm	4000



# Case study: complete filling line for fruited yoghurt

Client: Galaktika  
Region: Russia

Output: up to 12'000 plastic cups per hour, up to 72'000'000 cups per year: \$47 mn in revenues at \$0.65 per cup  
Shelf life: 30-45 days with yoghurts

The automatic 6-in-line machine PASTPACK 6L is designed for filling liquid and pasty products containing soft, easily deformable inclusions of up to 10 mm into plastic cups with further sealing with aluminum foil and capping.

## Automatic cupfiller Pastpack 6L

The automatic 6-in-line machine PASTPACK 6L is designed for filling liquid and pasty products containing soft, easily deformable inclusions of up to 10 mm into plastic cups with further sealing with aluminum foil and capping. The 6-in-line layout combined with servo motion provide high production capacity and user-friendliness.

- Ultra Clean versions (VDMA Hygiene Class IV) for filling & packaging in clean environment;
- Dosing systems are adapted for CIP-cleaning and SIP-sterilization with saturated steam;
- Stainless steel structure;
- Accessories from leading manufacturers (Festo, SMC, Omron, B&R, Schneider Electric etc.);
- Network performance of the control system, which facilitates maintenance and diagnostics, provides the ability to connect additional network devices (dispensers, pumping stations, etc.);
- Color touch screen (LS Industrial Systems, 7,2"; optional - Festo, LG, Siemens, Allen Bradley, etc.), intuitive interface in 7 languages.





# BENEFITS

All TAURAS-FENIX machines meets Russian quality standarts as well as foreign standats and have necessary certificates



# OUR WORLWIDE REFERENCE

**TAURAS·FENIX**  
MACHINERY WORKS

