



**LIPETSK REGION
IS THE BEST CHOICE FOR
SUCCESSFUL BUSINESS
DEVELOPMENT**



TERRITORY AND POPULATION OF LIPETSK REGION

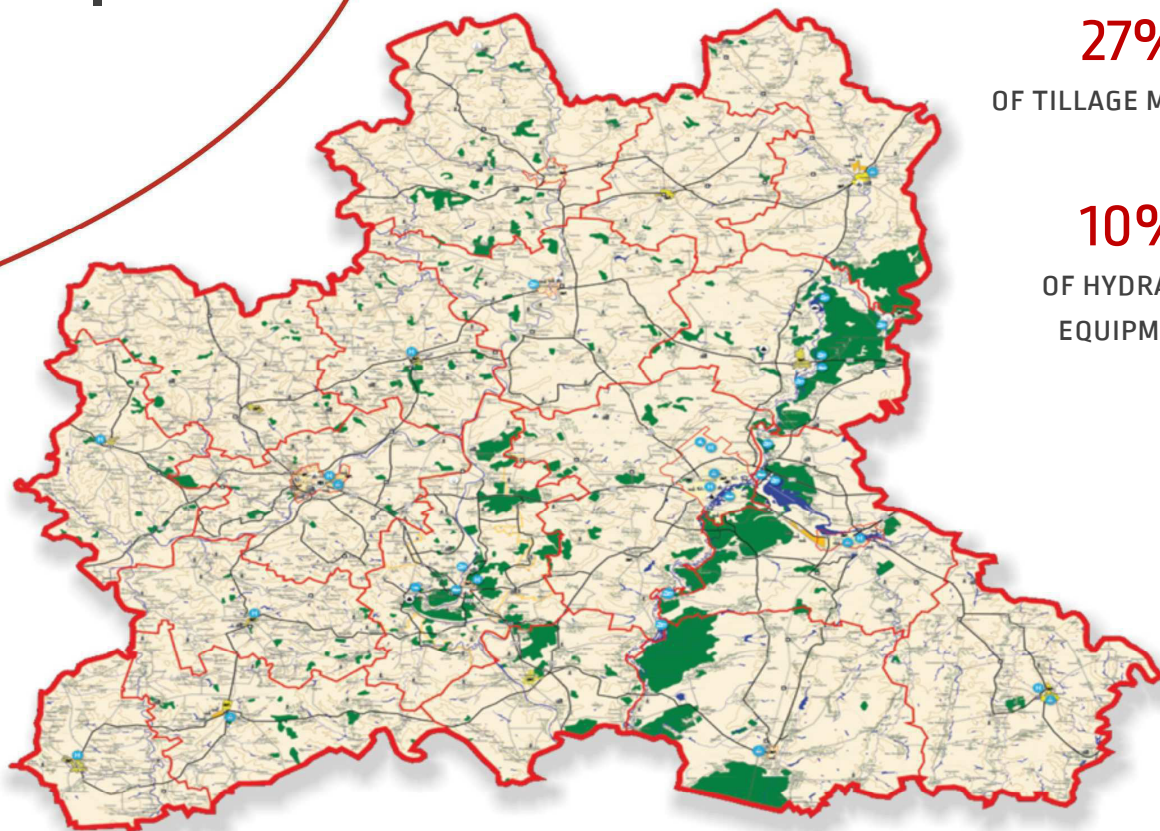
1171,3 THOUSAND
PEOPLE
[64% IN THE CITIES]

POPULATION



24,1 THOUSAND KM
[0,14% RF]

TERRITORY



200 KM

150 KM

24%

OF CAST IRON

19%

OF STEEL OUTPUT

29%

OF CONCRETE MIXING
MACHINERY

27%

OF TILLAGE MACHINES

26%

OF REFRIGERATORS AND
FREEZERS

29%

OF WASHING MACHINES

10%

OF HYDRAULIC
EQUIPMENT

73%

OF BABY FRUIT AND
VEGETABLE PRESERVES

12%

OF SUGAR

10%

OF STARCH

THE SHARE OF PRODUCTS,
MANUFACTURED IN THE LIPETSK
REGION,
ON THE RUSSIAN FEDERATION SCALE

RATINGS OF THE LIPETSK REGION ARE THE INDICATORS FOR THE INVESTOR OF TRANSPARENCY AND PROSPERITY OF THE REGION'S ECONOMY

FitchRatings 2017

BB+

CREDIT RATING IN FOREIGN AND NATIONAL CURRENCY ACCORDING TO THE INTERNATIONAL SCALE

ACRA

AA-
(RU)

NATIONAL LONG-TERM RATING

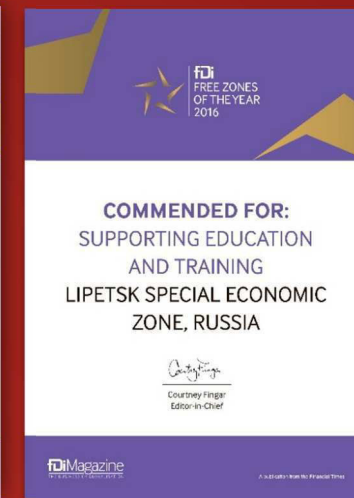
"STABLE"

LONG-TERM RATING OUTLOOK

EXPERTRA
RATING AGENCY

MINIMUM INVESTMENT RISK FOR 10 YEARS

2-3
PLACE
IN RF



MAIN INVESTOR COUNTRIES



NETHERLANDS



ISRAEL



KOREA



BELGIUM



IRELAND



USA



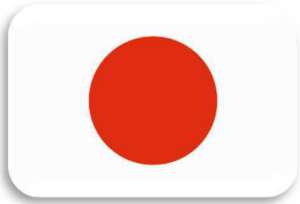
CHINA



LUXEMBOURG



GERMANY



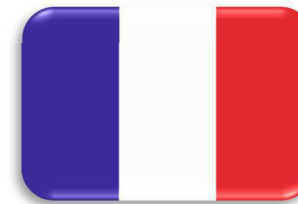
JAPAN



AUSTRIA



ITALY



FRANCE



GREAT BRITAIN

RUSSEZ

LIPETSK

Special economic zone
Industry

**ANY LEVEL OF BUSINESS
WILL FIND A DECENT PLATFORM
FOR ITSELF**

PRIVATE INDUSTRIAL ESTATES



**SEZ "LIPETSK" OF
INDUSTRIAL-PRODUCTION
TYPE**

NUMBER OF RESIDENTS: 50 FROM 15
COUNTRIES
THE VOLUME OF DECLARED
INVESTMENTS: 153 BILLION RUBLES (2.3
BILLION US DOLLARS)



**SPECIAL ECONOMIC ZONES OF
REGIONAL LEVEL**

10 SPECIAL ECONOMIC ZONES:
4 - OF INDUSTRIAL-PRODUCTION TYPE,
2 - OF TOURIST-RECREATIONAL TYPE,
1 - OF TECHNICAL-INNOVATIVE TYPE,
3 - OF AGRO-INDUSTRIAL TYPE
NUMBER OF PARTICIPANTS: 51
THE VOLUME OF DECLARED INVESTMENTS: 92.3
BILLION RUBLES (1.4 BILLION US DOLLARS)
NUMBER OF JOBS: 8.8 THOUSAND PEOPLE.



WORLD BUSINESS LEADERS - PARTNERS
OF LIPETSK REGION

ABB

Kahn

LIFAN

ALU-PRO
АЛУПРО

YOKOHAMA

VIESSMANN

PPG

LANXESS
Energizing Chemistry

OBO
BETTERMANN

BEKAERT
better together

FENZI

SEST-LUVE

alupro

Triott
Lipetsk

WORLD BUSINESS LEADERS -
PARTNERS OF LIPETSK REGION





**INVESTMENT AND
INTERNATIONAL RELATIONS
DEPARTMENT OF LIPETSK
REGION**

CORRESPONDENCE ADDRESS:
398014, LIPETSK, PL. LENINA-SOBORNAYA, 1
PHONE: +7 [4742] 27-55-83, FAX: +7 [4742] 27-17-09
E-MAIL: DIIR@ADMLR.LIPETSK.RU
WEBSITE: INVEST-LIPETSK.RU

**OJSC "CORPORATION FOR
DEVELOPMENT"**

CORRESPONDENCE ADDRESS:
398016, LIPETSK, PER. POPOVA, 5
PHONE: +7 [4742] 35-51-55, FAX: +7 [4742] 35-57-24
E-MAIL: INFO@OEZRU.RU
WEBSITE: WWW.KORPORAZ48.RU

OJSC "SEZ PPT LIPETSK"

CORRESPONDENCE ADDRESS:
398908, LIPETSK, SETTL. MATYRSKY, ADC
PHONE: +7 [4742] 51-51-80, FAX: +7 [4742] 51-51-
95, 51-53-39, 51-53-29
E-MAIL: INFO@SEZ.LIPETSK.RU
WEBSITE: WWW.RUSSEZ.RU, WWW.OEZRU.RU

SERVICE "ONE-STOP-SHOP SERVICE"

CORRESPONDENCE ADDRESS:
398908, LIPETSK, SETTL. MATYRSKY, ADC
PHONE: +7 [4742] 55-51-76,
E-MAIL: INFO@CENTER48.RU
WEBSITE: WWW.CENTER48.RU