



STL

Dock Systems

www.stl-rus.com



KRMZ





KRMZ

LLC "Krasnokamsk repair and mechanical plant" is a manufacturer of warehouse handling equipment since 2007



The STL handling equipment catalog provides all necessary equipment for unloading and unloading products in warehouses and distribution centers.

- dock-levelers of all sizes
- Transport tambours (gateway-tambours) and farms
- dock-shelters
- lift tables
- mobile ramps



For production of the STL equipment the Krasnokamsk RMP uses the modern European equipment:

- laser cutting machines "Schiavi" and "Giotto" (Italy)
- bending presses with program control
- welding robotic complex SIAD (Italy)

All products are subjected to shot blasting before painting. Painting of products is carried out by two-component wear-resistant enamel.

For the manufacture of dock-levelers and lift tables at Krasnokamsk RMP apply the hydraulics of Hydraulics Brevini (Italy).

Highly skilled workers of Krasnokamsk RMP made STL handling equipment accurately and on time.

Thanks to sophisticated software and many years of experience and development Department of Krasnokamsk RMP in a short time develops handling equipment tailored to the needs of each client.



Dock-levelers – platforms to compensate for the difference in height between the warehouse floor and vehicle body. Levelers provide unobstructed access of the forklift into the truck, which reduces the time for loading/unloading.

STL dock-levelers:

- electro-hydraulic with rotary ramp
- electro-hydraulic with telescopic ramp



How do STL dock-levelers work?

Control of the equalizing platforms DTL is carried out using a stationary push-button remote.

1. To prepare for work, you need to raise the platform to the top position and push the ramp to the desired distance on the telescopic platform. On a platform with a rotary ramp, the ramp will be opened automatically.

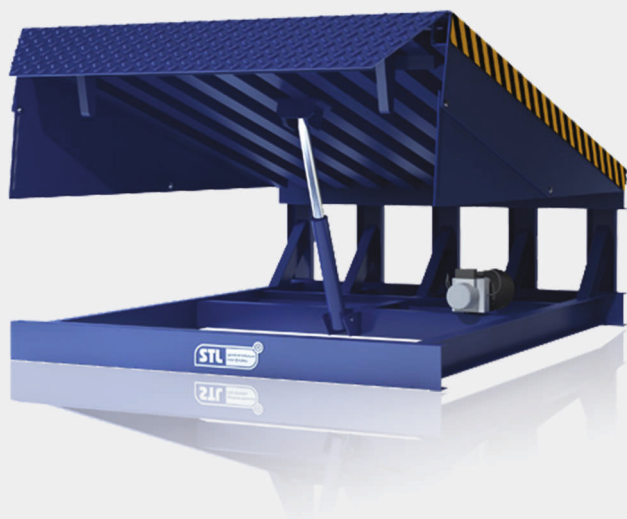
2. Dock-leveler smoothly falls on the car body and the platform is ready to operate.

3. After shipment/unshipment, you need to lift the platform again, push the telescopic ramp on the telescopic platform. On the platform with a rotary ramp, the ramp will be closed automatically-the platform will fall into the Parking position.

DTL platform package contents:

- Standard dock-levelers are equipped with one main lifting cylinder and one ramp control cylinder. This reduces the number of elements in the hydraulic circuit and increases the reliability of the product.
- Longer dock-levelers are equipped with two main cylinders for lifting.
- The upper sheet of the platform is made of steel sheet with lenticular corrugation thickness of 6-8 mm and has stiffening ribs, which allows to withstand the load of 6-12 tons. The thickness of the ramp - 10-16 mm.

DOCK-LEVELERS STL WITH A ROTARY RAMP



The name of the feature	The value of the parameter
Overall length, mm	2000/2300/2500/ 2800/3000/3300
Width, mm	1800/2000/2200
Ramp length, mm	400 (500 under the order)
Load, kg	6000/12000
Operating temperature range, °C	-45...+50
Number of lifting cylinders, PCs	1 (2 under the order)
Supply voltage, V	380
Power of hydroelectric power, kW	1,1/2,2
Color	Two-component enamel painting RAL 5010 (other under the order)
Remote control protection class	IP65
Motor protection class	IP54
Tank capacity, l	5-8
Segmented ramp	(under the order)

DOCK-LEVELERS STL WITH A RETRACTABLE RAMP



The name of the feature	The value of the parameter
Overall length, mm	2000/2500/3000
Width, mm	1800/2000/2200
Ramp length, mm	1000
Load, kg	6000/12000
Operating temperature range, °C	-45...+50
Number of lifting cylinders, PCs	1 (2 under the order)
Supply voltage, V	380
Power of hydroelectric power, kW	1,1/2,2
Color	Two-component enamel painting RAL 5010 (other under the order)
Remote control protection class	IP65
Motor protection class	IP54
Tank capacity, l	5-8
Segmented ramp	(under the order)

Dockshelter foldable, curtain – a device for sealing the space between a truck and storage space. The dock opening is a frame on which are mounted side and front curtains made of special PVC. When parking the car, it tightly fit the body of the car and protect the warehouse from rain and wind, as well as maintain the temperature in the warehouse.

The frame of the sealer is made of a steel profile with a thickness of 3 mm and has a rigid collapsible design that allows installation directly on the wall



The name of the feature

The value of the parameter

Height, mm **3000/3200/3400/4400**

Width, mm **3000/3200/3400**

Depth, mm **650**

Operating temperature range, °C **-40°C...+50**

Frame material **Steel 3 GOST 380-2005**

The front curtains **Reinforced (double layered)
PVC – thickness 3 mm
Density 3,6 kg/m2
Color black**

Side awnings **PVC (tent material, type 1 M)
Density – 0,8 kg/m2
Color black**



GATEWAY-TAMBOURS STL

Gateway-tambours – the metal structure, placed outside the warehouse. It allows you to save the area of the warehouse and use the handling equipment without the reconstruction of the warehouse.

The gateway-tambour consists of a remote frame on which the dock-leveler and the frame of the gateway-tambour are installed. The frame is sheathed with corrugated sheet or sandwich panel. Gateway-tambours are adjacent to the wall at an angle of 30, 45, 60 and 90 degrees.

For removal of residues and water, the roof of the tambour is made under a slope of 5 degrees.

The dimensions of the gateway-tambour depend on the height of the dock-leveler and the dock-shelter.



Lifting table – a device for vertical movement of goods between different levels of the warehouse. Lifting tables are used not only as a lifting platform for loading and unloading of goods, but also as cargo tables – it is a more rational and less expensive solution than a freight Elevator.



Construction of lifting table

The lifting table consists of a base, a cargo platform, a system of scissor levers, hydraulic cylinders, a hydro station and a lifting table control system.

Depending on the operating conditions and customer needs, the lifting table can be equipped with folding ramps and fences (fixed or removable).

The friction parts of the lifting table are made of high-quality synthetic materials on a thermoplastic basis, which do not require lubrication. This reduces the dependence on the human factor and simplifies maintenance.

The complete set of the lifting table has the ability to adjust the upper position of the cargo platform with the help of limit switches.

Maintenance service

On customer's request, the hydraulic station can be moved outside the lifting table for easy maintenance and protection from the environment.

With the construction of the lifting table provided folding stops for maintenance and repair work.

The lifting table can be equipped with an inspection hatch for visual inspection of the inner platform space.

Safety

The lifting table is equipped with a safety frame – it is located around the perimeter of the cargo platform. In case of collision with an obstacle, the lifting table instantly stops – this allows you to eliminate injuries to personnel and ensure the safety of equipment.

STL lifting tables on Krasnokamsk RMP can be made according to individual sizes and technical characteristics of the customer.



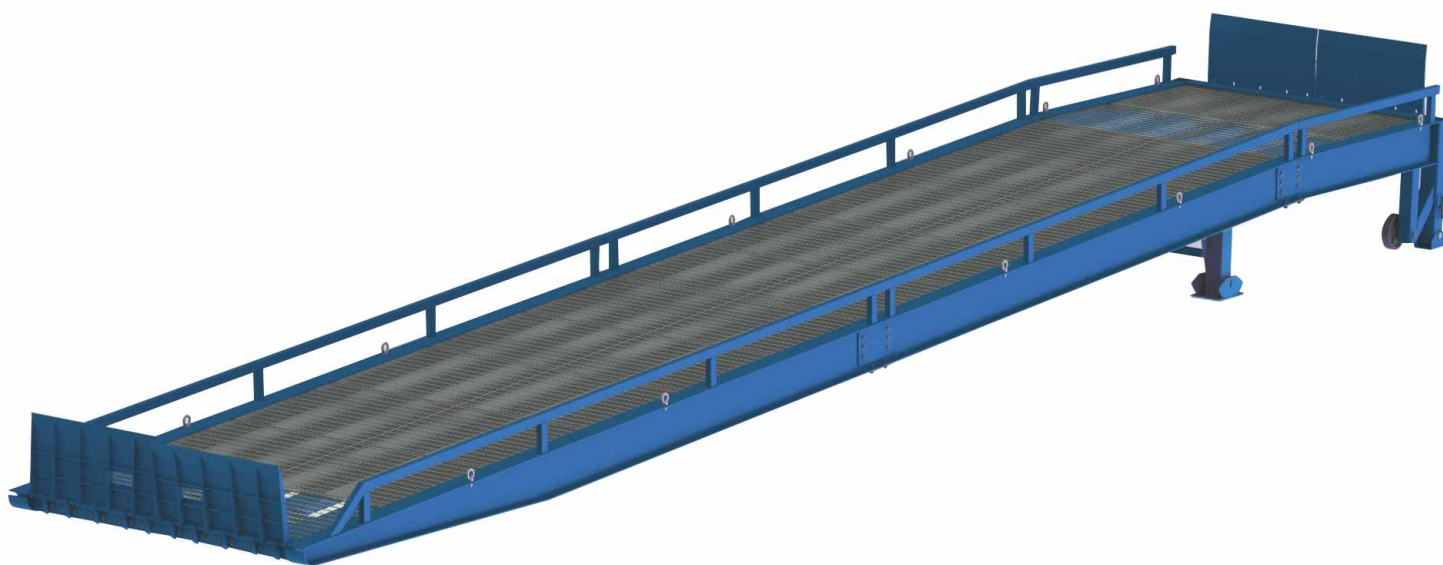
Mobile and stationary ramp (overpass) – inclined metal platform in the form of a bridge. It compensates for the difference in height between the car body and the ground.

The rise and fall of the ramp is using the jack. Welded grating (galvanized) provides even load distribution and good grip of the ramp with the wheels of the loader.

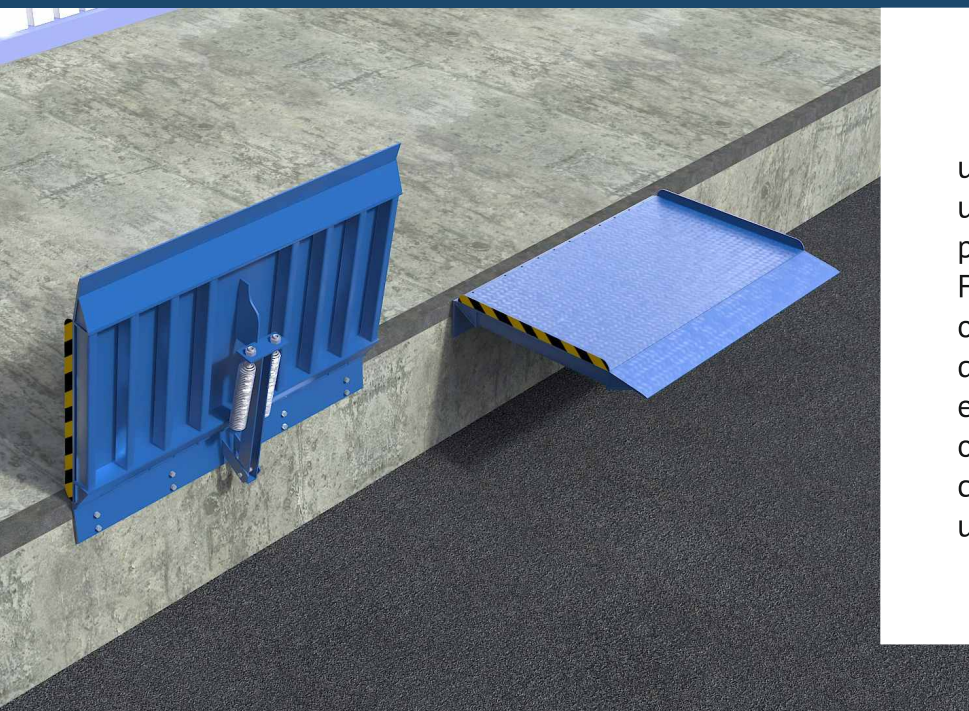


Advantages of STL mobile ramp:

- welded grating galvanized flooring allows you to evenly distribute the load on the bearing elements of the structure and makes it more rigid, which leads to an increase in service life. The galvanized surface practically does not corrode, unlike the expanded deck
- possibility to transport the mobile ramp disassembled in a truck with a body length of up to 6 meters
- removable fences facilitate storage, transportation, allow for simple repair or replacement in case of damage
- metal rubberized wheels – no need to check the pressure, repair the wheels when punctured, etc.
- installed eye-bolts to facilitate loading and unloading
- shot blasting of the product before painting
- high-quality paint coating with two-component enamel according to the RAL table (RAL 5010 or at the request of the customer)



Characteristic	RM 9-7	RMG 12-7	RMG 12-2L-7	RMG 12-2P-7	RMG 12-3LP-7
Overall length	9 100	12 000	12 000	12 000	12 000
Overall width	2 250	2 300	2 300	2 300	2 300
The length of the inclined part	9 000	9 000	9 000	9 000	9 000
The length of the horizontal platform	none	3000	3000	3000	3000
The width of the roadway	2 100	2 100	2 100	2 100	2 100
Adjustable ramp lift	900...1450 (options are available on request)				
Flooring material	Welded lattice galvanized flooring				
Nominal load capacity	7 000	7 000	7 000	7 000	7 000
Transportation wheels	Metal rubberized, 2				
Number of folding ramps	2	2	4	4	6
Mass	3 000	3 800	3 850	3 850	3 900



Folding bridges are designed for unloading of railway cars or for unloading trucks when there is no possibility to park close to the ramp. Folding bridges are installed on an open ramp in a stationary or sliding design, compensating for the difference between the ramp and the body of the cargo platform. The lifting capacity of the STL folding bridges is up to 4 tons.

Mini dock-leveler – mechanical leveler platform. It's used when the height difference between the loading ramp and the floor of the vehicle is not more than 150 mm.

The equipment is made of steel sheet with lenticular corrugation thickness of 6-8 mm and has stiffening ribs that allows to withstand loads up to 8 tons.



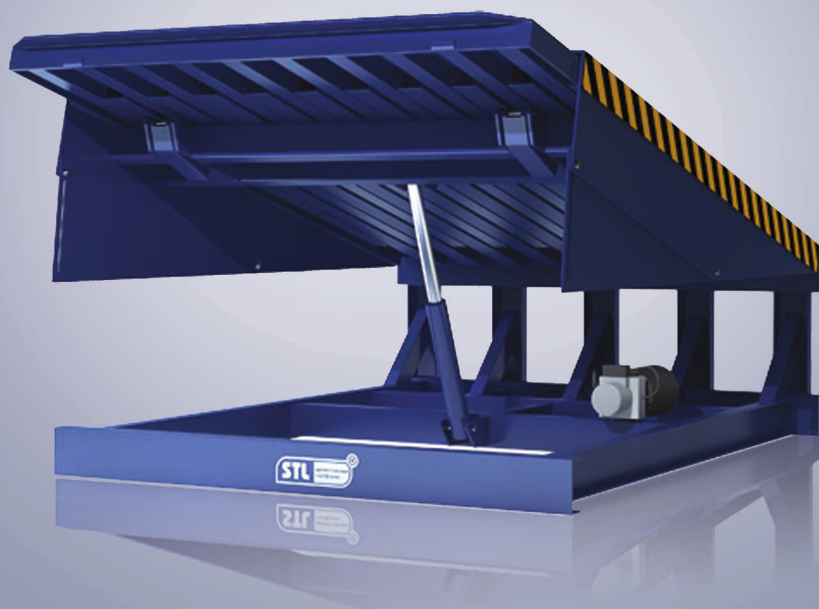


A series of horizontal dotted lines spanning the width of the page, intended for writing. The lines are evenly spaced and cover most of the page area.





KRMZ



KRMZ

4, Trubnaya st., Krasnokamsk,
617060, Perm Territory, Russia,
8 (342) 255-40-54
e-mail: stl@krmz.info