

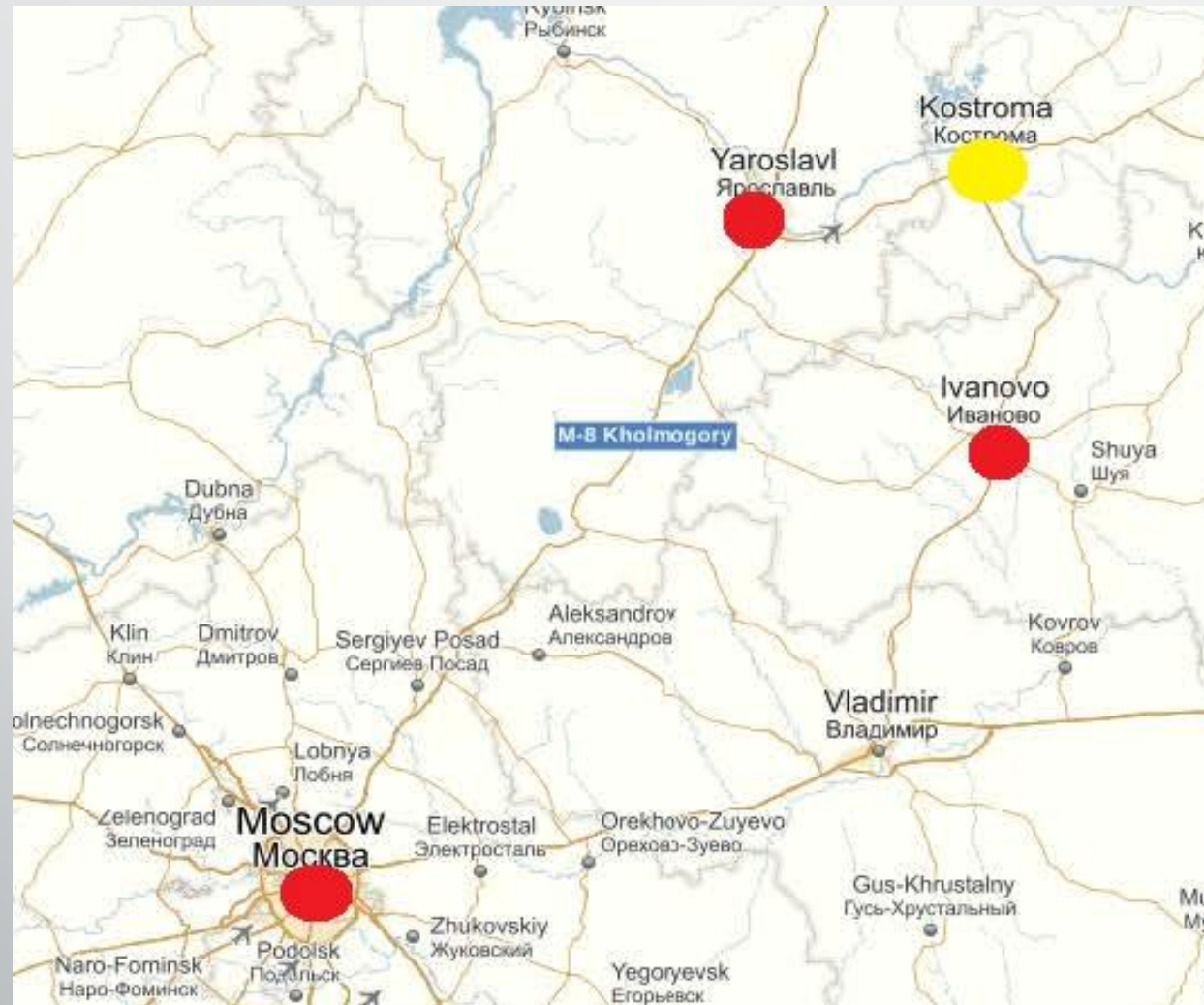


*Information on the plots of land*

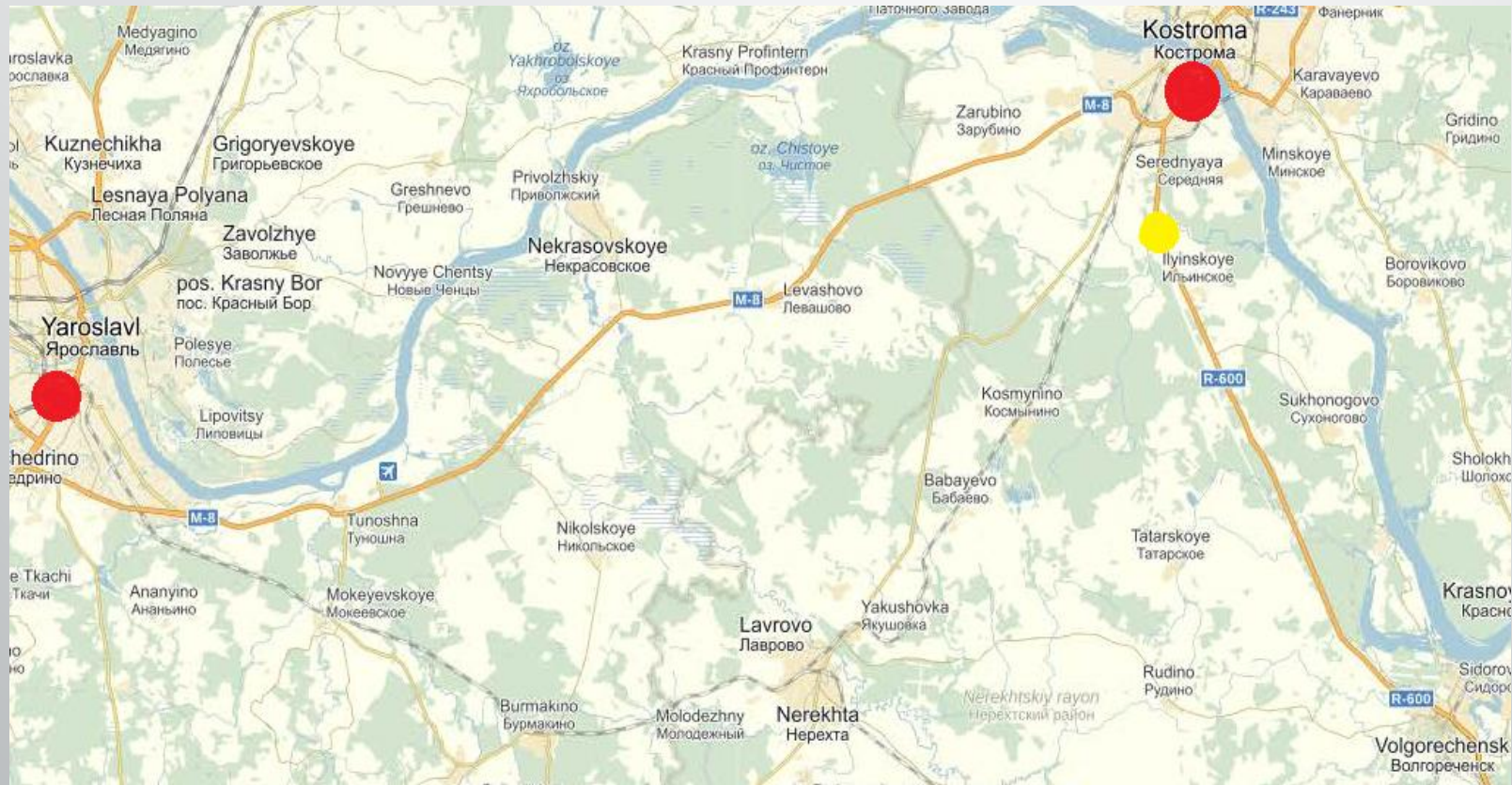
*Kostroma*

- *The agricultural lands are located in Kostroma area of Kostroma region, near the village of Ilyinskoe. The total area of lands is 1000 ha. All lands (44 plots of land, ranging in size from 3 up to 85 ha) are in personal ownership.*
- *Remoteness from the main administrative centers:  
3 kilometers from Kostroma,  
90 kilometers from Ivanovo,  
320 kilometers from Moscow,  
80 kilometers from Yaroslavl.*
- *The Federal Highway Kostroma-Ivanovo goes through the lands and is joined by Highway M7 leading further to Moscow.*
- *International airports of Yaroslavl and Ivanovo.*
- *The total population of neighboring regions is:  
Kostroma Region – 658 925 people.  
The City of Kostroma – 268 742 people.  
Yaroslavl Region – 1 271 856 people.  
The City of Yaroslavl – 591374 people.  
Ivanovo Region– 1 049 385 people.  
The City of Ivanovo – 409 277 people.*

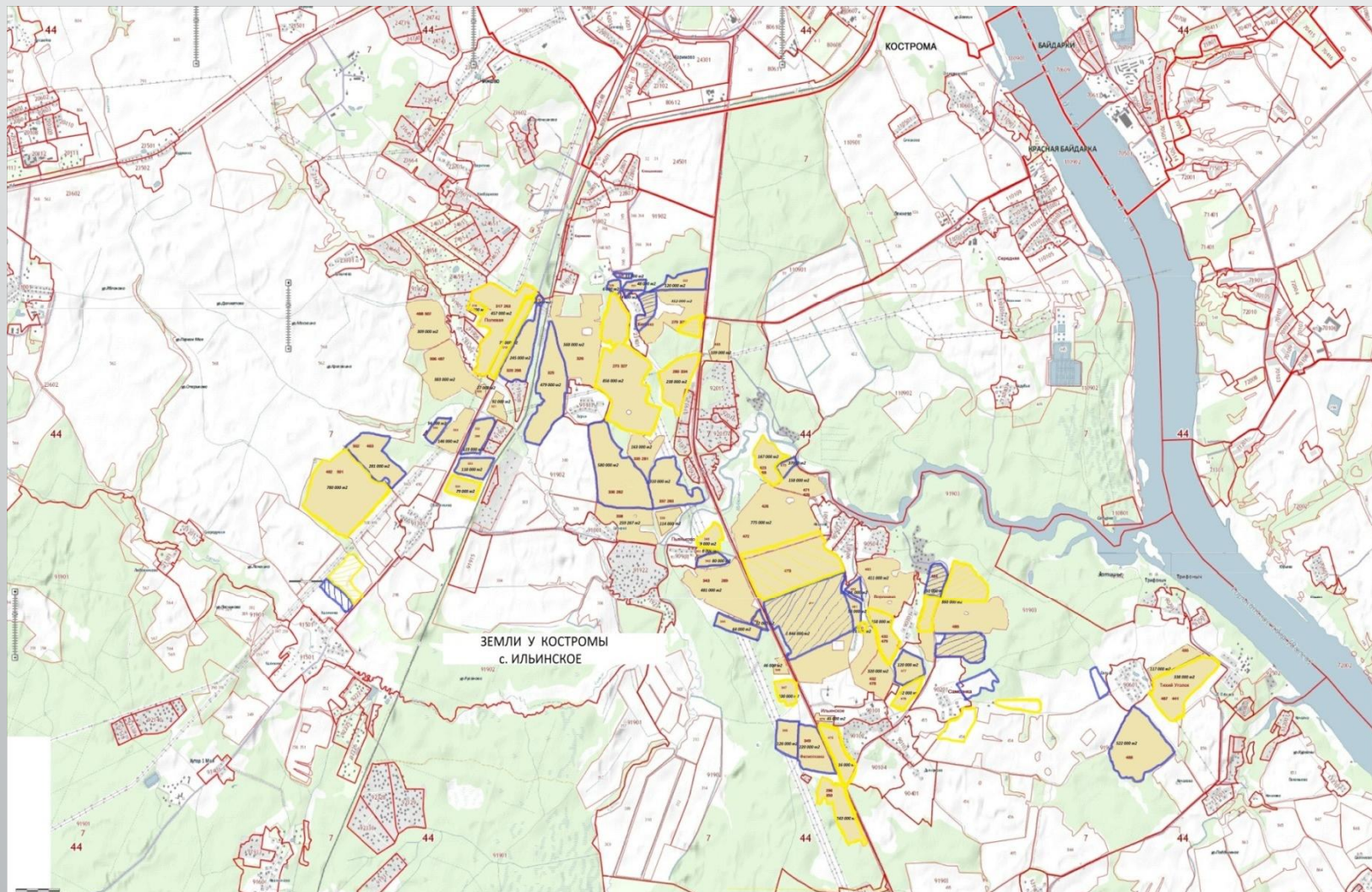
## *General layout plan of lands within Central Federal District*



# General layout plan of neighboring regions



# *Location plan of the plots of land*



- *The plots of land are highlighted in yellow and blue.*

## *Main educational institutions of Kostroma — Higher education institutions*

- *Kostroma State Technological University (KSTU) — specialists in textile industry, jewelry, mechanical engineering, information technology.*
- *Kostroma State University (KSU) — pedagogics, foreign languages, legal studies.*
- *Kostroma State Agricultural Academy – specialists in agrobusiness, rural electrification and agricultural mechanization, industrial and civil construction.*
- *Military Academy of Radiation, Chemical and Biological Defense —military specialists in the sphere of technology of organic substances, development and production of special materials and means of biological protection for armed forces and environment.*

## *Main educational institutions of Kostroma — training schools*

- *Kostroma Energy Technical School – specialists in thermal engineering, electrical engineering and gas supply.*
- *Kostroma Motor Transport Technical School — specialists in road building and motor transport.*
- *Kostroma Mechanical Engineering Technical School — specialists in radio-electronics and metal working.*
- *Kostroma Mechanical and Technological Technical School — specialists in technology of sewing and garment design.*
- *Kostroma Timber Mechanical Technical School — specialists in woodworking, aesthetic forestry and landscape design.*

# *Main educational institutions of Yaroslavl — Higher education institutions*

- *Yaroslavl State University (YaSU) — specialists in humanities, mathematics, physics, history, economics, law, information technology.*
- *Yaroslavl State Medical University (YaSMU) — specialists in pediatrics and medical care, pharmaceuticals and dentistry.*
- *Yaroslavl State Agricultural Academy — specialists in agronomical science, zootechnics, electric engineering, ecology, information and biological technology.*
- *Yaroslavl State Technical University (YaSTU) — specialists in mechanical and chemical engineering, automobile engineering, industrial and civil construction.*



# *Main educational institutions of Ivanovo — Higher education institutions*

- *Ivanovo State Polytechnic University (ISPU) — a wide range of specialists in a variety of industrial sectors.*
- *Ivanovo State University of Chemistry and Technology — specialists in radio-electronics, chemical engineering, food manufacturing industry.*
- *Ivanovo State Energy University — specialists in engineering industry.*
- *Ivanovo Textile Institute — specialists in textile industry, engineering, economics and service industry.*
- *Ivanovo State Agricultural Academy — specialists in agronomics, agri-engineering, agricultural chemistry, economics and land management.*

# *Vocational Educational Institutions of Yaroslavl and Ivanovo*

- *Yaroslavl Railway Technical School — specialists in operation and maintenance of railway vehicles.*
  - *Yaroslavl Agricultural and Polytechnic Technical School — specialists in agricultural science, land planning, landscape architecture.*
  - *Yaroslavl College of Hotel and Construction Industry — hotel and tourist service, general construction works.*
  - *Ivanovo Pharmaceutical College — specialists in the sphere of pharmacy.*
  - *Mechanical College of Ivanovo State Energy University — specialists in mechanical engineering, economics and marketing.*
  - *Ivanovo Technical School of Radio Engineering — specialists in maintenance and repairs of radio equipment.*
- Ivanovo Power Engineering College — specialists in installation, maintenance and management of electric power systems.*

## *Historical background*

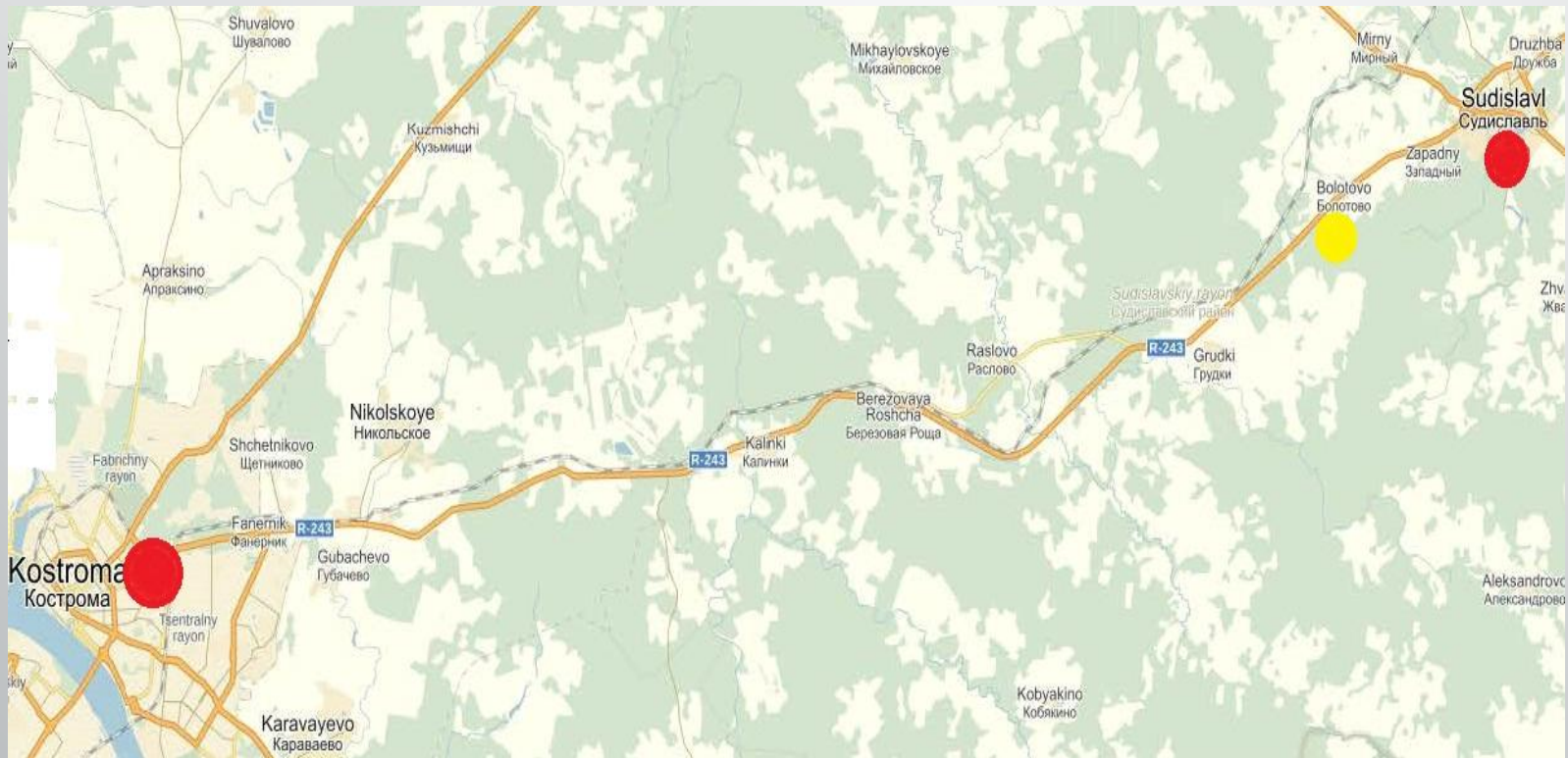


- *Kostroma was founded in 1152 by Prince Yury Dolgoruky. In 1613, after the coronation of Mikhail Fedorovich Romanov, Kostroma became the cradle of the Tsar and Emperor Dynasty of the Romanovs.*
- *The main sights of Kostroma are the Ipatiev Monastery, Bogoyavlensky Convent, the Trade Rows, the Fire Tower, the Museum of Woden Architecture, ancient churches and temples.*
- *Modern Kostroma is a major center of jewelry and is famous for engineering, textile industry and woodworking.*
- *Kostroma is included into the Golden Ring of Russia as a significant object of tourism and history.*

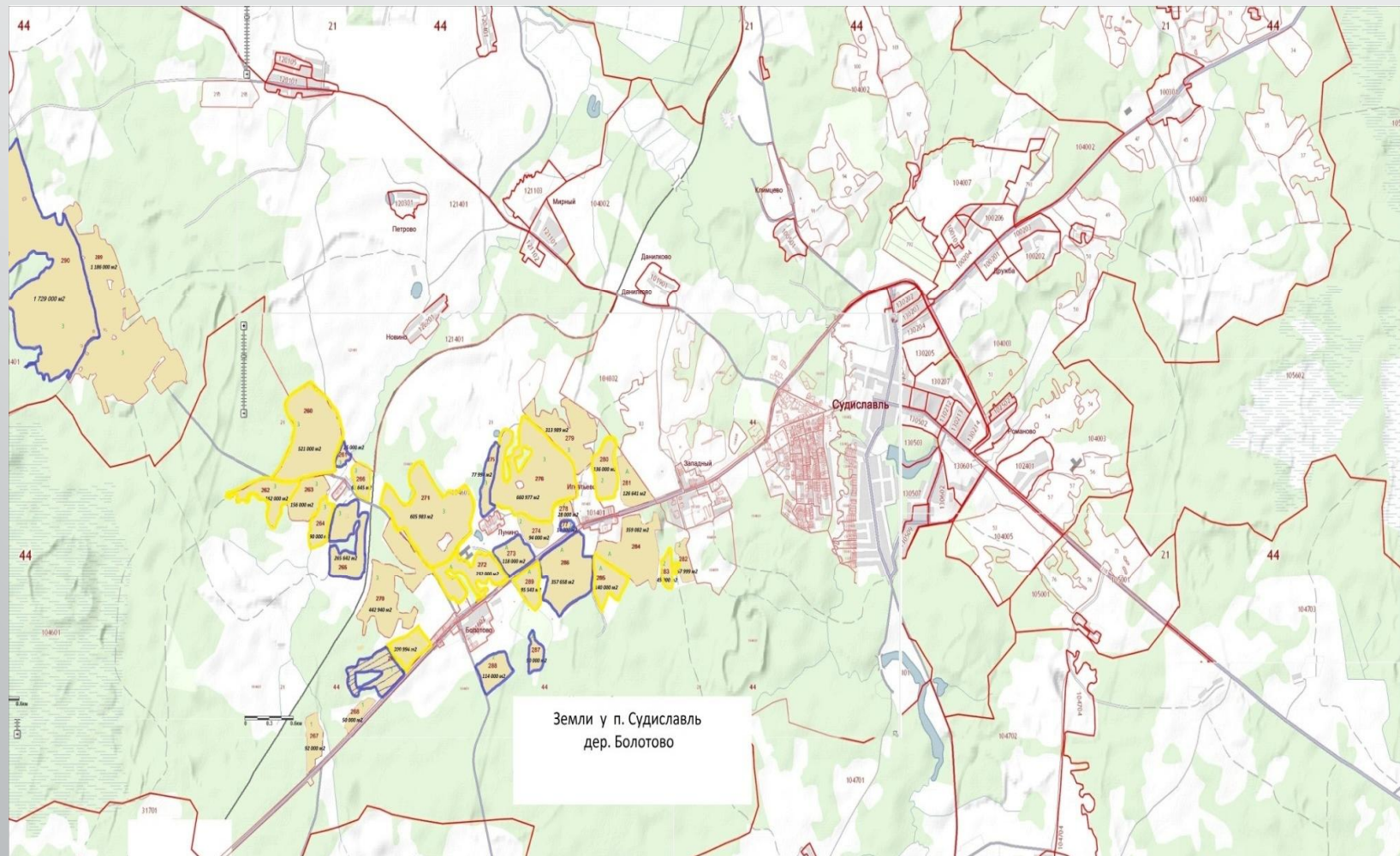
# *Sudislavl area of Kostroma region*

- *The plots of land are located in Sudislavl area of Kostroma region, the total area of land is 600 ha. All lands (20 plots of land, ranging in size from 5 up to 170 ha) are in personal ownership.*
- *The automobile road Kostroma - Verhne-Spasskoye, the main highway of the area, goes through the territory of the lands.*
- *The plots of land are located in 30 kilometers from Kostroma, the administrative center, and in 4 kilometers from Sudislavl, the center of the area.*

# General layout plan of lands of Sudislavl area



# *Location plan of the plots of land*



*The plots of land are highlighted in yellow and blue.*

# *Historical Background*



- *Sudislavl was founded in the first half of the 14th Century by Knyaz Sudislav Vladimirovich. Many noble men of Russia used to have their estates in this area: P.P.Polyakov, a commandant of Moscow; the Bartenevs, whose noble house gave Russia a naval admiral and an architect, the author of the Triumphal Arch in Moscow; famous poets and artists.*
- *Modern Sudislavl is represented within Russia by its large fur factory, production of retail space furniture, welding materials, woodworking industry and agricultural production.*