

TYRES **VIATTEI**

Paradigma del comfort*

* Paradigm of comfort



www.viatti-tyres.com

Viatti brand background

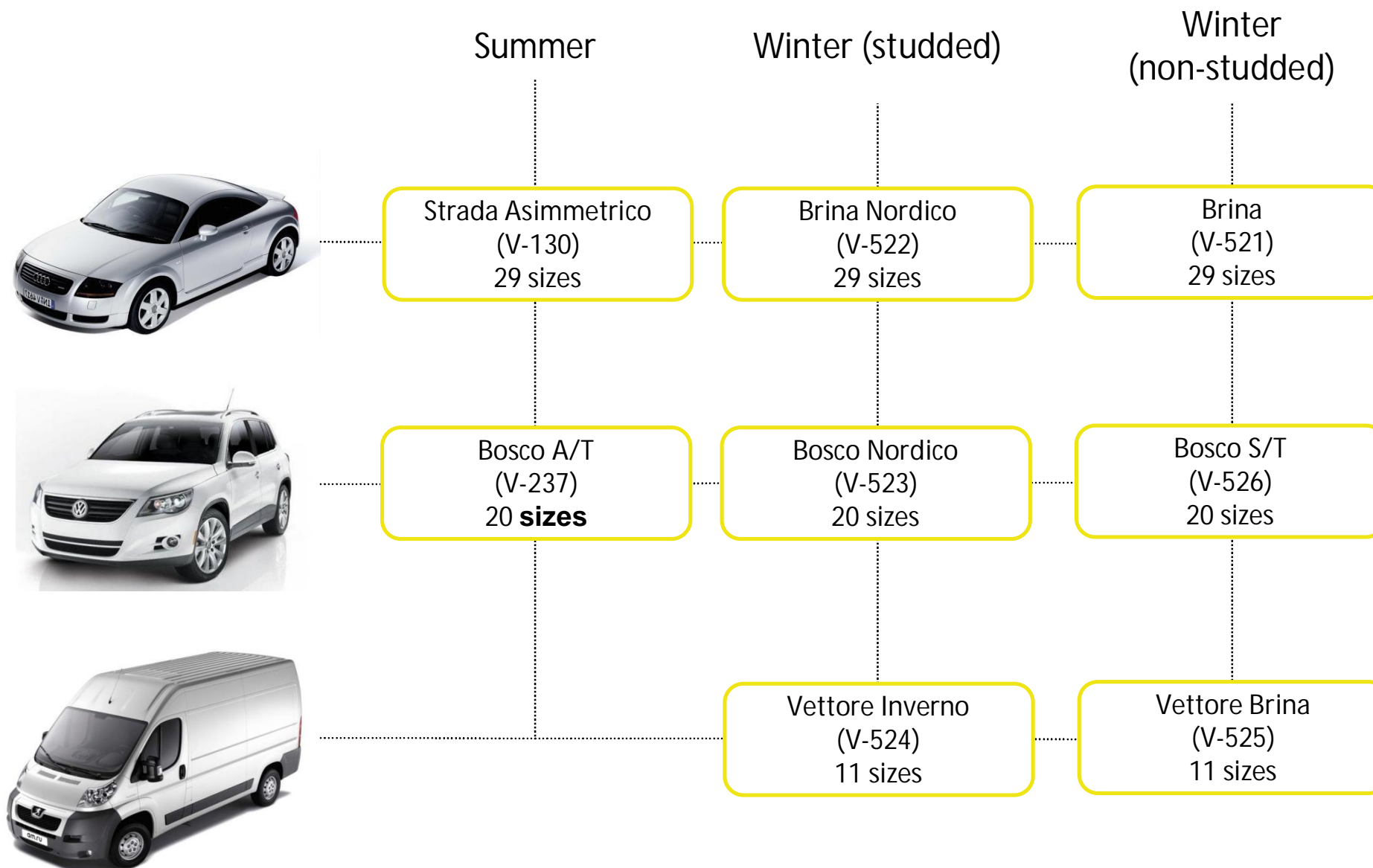


Viatti brand tires are produced in Russia by the order of “Viatti Tires Rus” LLC. Company founders are German and Italian investors that have vast experience in tire production in their own countries.

Tires are produced based on off-take system in the manufacturing site of Nizhnekamskshina JSC. The general distributor of these tires is Trading House “Kama” LLC. The factors of selecting a manufacturing site in Nizhnekamsk are as follows:

1. A big parent company – one of the biggest oil company Tatneft JSC in Russian Federation;
2. Modern production equipment ensuring an appropriate quality and amount of tires produced;
3. Knowledge acquired by JSC Tatneft tire plants in production of off-take tires for foreign partners;
4. Ready for service distribution network of Trading House “Kama” LLC that covers all subjects of Russian Federation and 42 countries of the world;
5. Experience of Nizhnekamskshina JCS cooperation with the biggest automotive companies such as AUTOVAZ, GM, VW-Skoda, Ford, Renault-Nissan, FIAT located within the Russian Federation;
6. Availability of the own certified laboratory and scientific and technical center.

Viatti tires portfolio



Strada Asimmetrico

TYRES
VICTREX

Strada Asimmetrico is the range of PC tires with asymmetrical non-directional tread design.

Product mix includes 28 sizes ranging from 13" to 18" bead seat diameter.

Operational temperature of the tires varies from +2 to + 55 °C.

It is designed for use on roads with improved permanent surface.



Strada Asimmetrico

TYRES
PIRELLI

Outside



Inside

Asymmetrical tread pattern

Asymmetrical tread pattern provides optimized wet and dry grip performances of the tire. It also contributes to better straight line handling and handling during cornering and lane change maneuvers as well.



VRF¹ technology

Tire is distinguished by variable sidewall stiffness due to the use of patented co-synthesis product in rubber compound. This property helps tire to adapt to road surface, to cushion impacts on a bumpy road and increases sidewall stiffness on a high speed.

1 - Variable rigidity of a framework

Strada Asimmetrico

TYRES
PIRELLI

Outside



Hydro Safe S technology

Wide longitudinal grooves effectively channel water away from the contact patch. The widest groove is located outside that ensures high stability in cornering on wet surface.

Stiffening ribs between grooves provide road-holding ability of the vehicle.

Inside



Grooves for fast water removal

High flexible grooves for fast removal of water located on the inner side of tread are designed for aquaplaning resistance and ride comfort improving.

To accelerate the flow of water mass to be removed from the contact patch the depth of lateral grooves in shoulder area is minimized.

Strada Asimmetrico

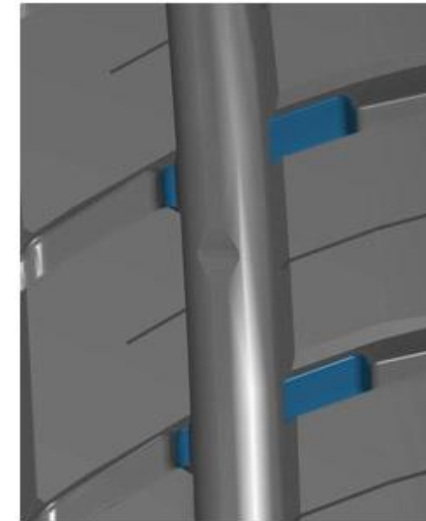
TYRES
VICEEI



All weather tires

The outer side (OUTSIDE) of tire tread contributes to the excellent dry handling. Handling is ensured by stiff rubber used in longitudinal and lateral grooves along tread's shoulder area.

The inner side (INSIDE) of tread contributes to the excellent wet handling. Handling is ensured by reinforced lateral grooves and water evacuation through longitudinal and lateral grooves.



Comfort

Specifically arranged microprojections at the bottom of circumferential grooves located on the inner side of tread help to reduce noise level.

Strada Asimmetrico

TYRES
VIALETTI



VRF (Variable rigidity of a framework) technology, i.e. variable stiffness of sidewall, depends on speed change. Tire adapts to road surface and ensures cornering at higher speed. When on rough road, it cushions impacts from driving over potholes and asphalt joints

ty
r
h
Hydro Safe S technology – three wide longitudinal grooves efficiently channel water away from the contact patch. The widest groove is located outside that ensures high stability in cornering on wet surface

pa
Solid ribs on the outside and central part of tread equally distribute load while driving at a high speed and cornering.

High flexible grooves for fast removal of water located on the inner side of tread are designed for aquaplaning resistance and ride comfort improving.

ки
т
а
э
т
Heavy design of central and inner part of Strada Asimmetrico tread provides effective tractive effort.

Bosco A/T

TYRES
VICTREI

Bosco A/T is a tire line with symmetrical and non-directional type tread design designated for SUV cars.

Product mix includes 20 sizes ranging from 15" to 18" bead seat diameter.

It is designed for the operation on the roads with improved permanent and semiprepared surface at ambient temperature from -45 up to +55°C.

It can be used in mud or melting snow conditions.





VRF ¹ technology

Tire is distinguished by variable sidewall stiffness due to the use of patented co-synthesis product in rubber compound. This property helps tire to adapt to road surface, to cushion impacts on a bumpy road and increases sidewall stiffness on a high speed.



Hydro Safe technology

Four longitudinal grooves effectively and quickly channel away water from the contact patch. Nonuniform geometry and sharp edges of the central blocks contribute to the effective cleaving of the water surface.



NoNoise technology

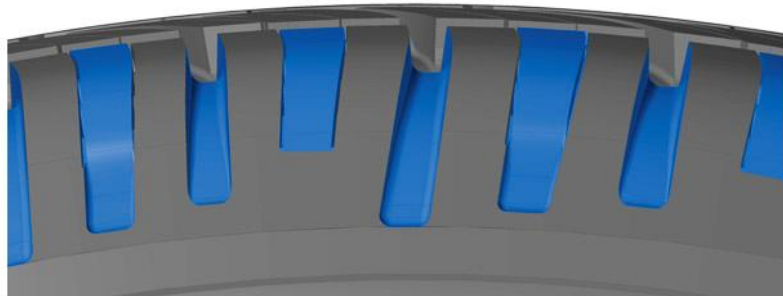
Lateral grooves of different geometry in the center of tread and sipes angled under certain degree decrease pattern uniformity and reduce noise level.

Microprojections in longitudinal grooves form additional grip borders and prevent from noise generation.



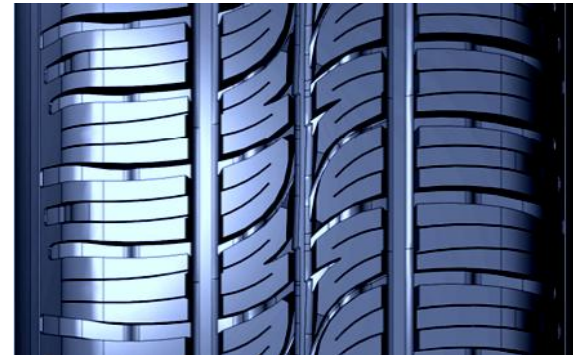
HighStab technology

Tread pattern has a stiff central rib and longitudinal reinforced block rows that provide motion stability in a straight line and high rate of severe maneuvers performance.

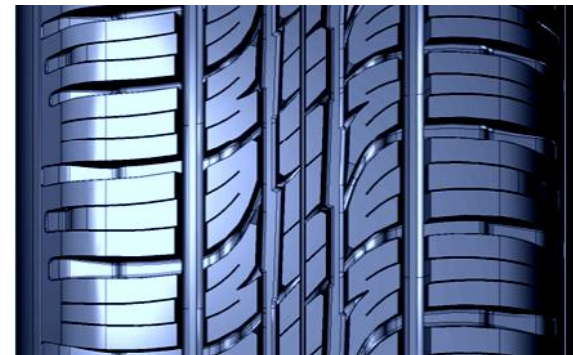


DirtMove technology

Tread pattern is designed with wide lateral grooves in shoulder area that in combination with special lugs located between sipes of tread shoulder blocks improve vehicle's off-road capability.



Up to 205 mm
inclusively



More than 215
mm inclusively

2 tread patterns

Bosco A/T tires range is designed with two different tread patterns depending on tire section width. Tires with section width of 215mm and more have additional central reinforcing rib.

Viatti tires advantages

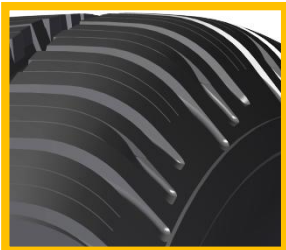


Improved tire profile ensures correct deformation behavior under load that optimizes tire operation.

Optimum pressure distribution over contact patch increases the area of tire contact with road surface thus providing the stability and improved handling.



Application of patented co-synthesis product, having the best reinforcement properties comparing to conventional raw material used for tire production, in rubber compound allows to reduce tire weight. New product also reduces heat build-up in tire that increases its life cycle.



Smooth transition of sidewall into tread ensures more effective handling on hard surface road.



Viatti tires were developed with respect to Russian weather and road conditions. Combination of silica and patented co-synthesis product in rubber compound provides for consumer performance in specified temperature range. Tire reliability in Russian road conditions is ensured by new belt and sidewall materials application.

Cooperation with automotive companies

TYRES
VICTREI



Strada Asimmetrico tire projects

Existing

Perspective

ŠKODA



Bosco A/T tire projects

Existing

Perspective



Volkswagen

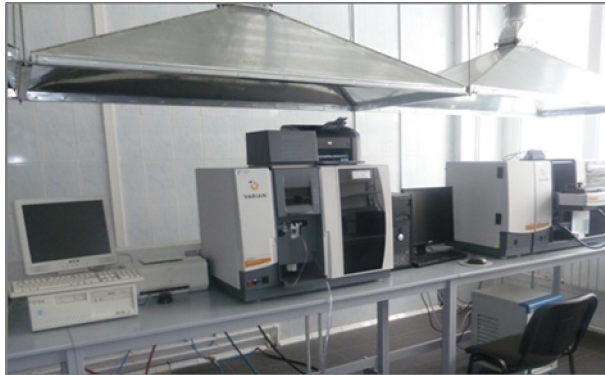


RENAULT

Viatti tires production process



Chemical analysis laboratory



Physical and mechanical analysis laboratory



Testing center



Mixing room

Production of rubber compounds used for different semi-finished products manufacturing

Preparation and tire building shop

- Steel cord cutting line;
 - Calender line;
- Bead ring winding machine;
 - Tread extrusion lines (Duplex, Triplex, Quadroplex);
 - Innerliner line;
- Cap strip manufacturing line;
- Green tire spraying machine;
- Bead apex assembly line;
- Tire building machines

Curing room

- Curing presses (42/46/52");
- Curing molds washing machine

Quality inspection

- Tire uniformity line

Viatti tires production process

TYRES
VIATEI



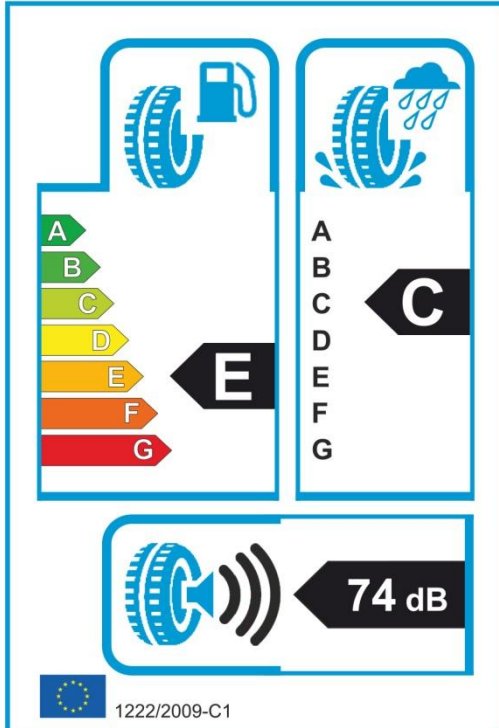
Certification of tires



Paradigma del comfort

BOSCO A/T

235/55R17 99H 240 km/h



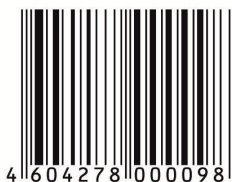
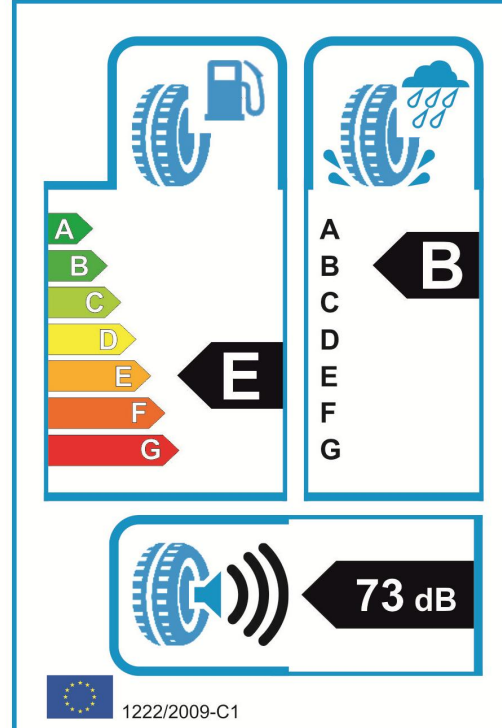
www.viatti-tyres.com
e-mail: info@td-kama.com
8 800 100 12 72
Toll free in Russia



Paradigma del comfort

STRADA ASIMMETRICO

195/65R15 91V 240 km/h

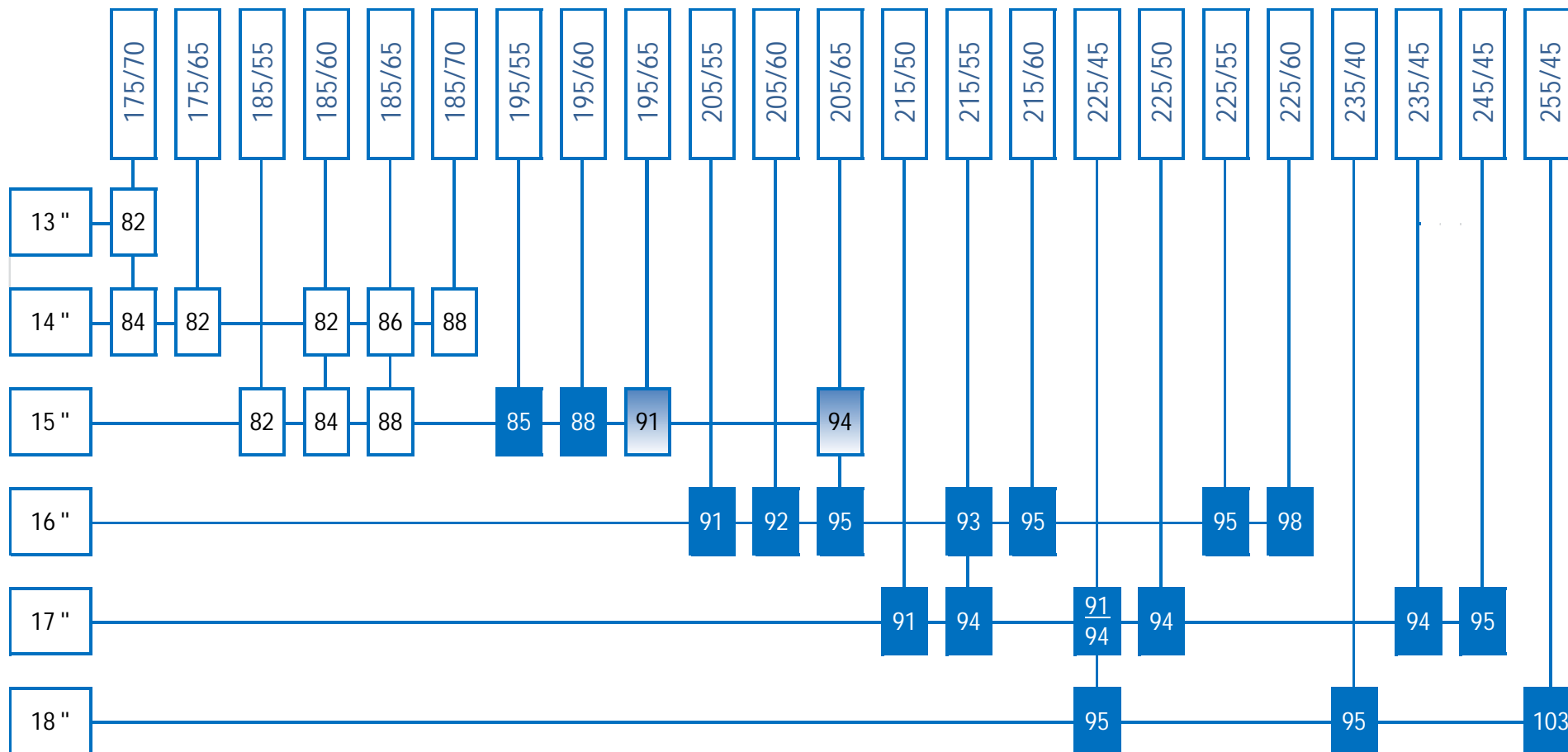


www.viatti-tyres.com
e-mail: info@td-kama.com
8 800 100 12 72
Toll free in Russia

High quality of Viatti tires was evidenced during numerous tests performed for the compliance with Russian and international Quality Standards.

Exported tires have label with indication of fuel consumption, wet grip index and external noise level values that were recorded during tests carried out for compliance with ECE Regulation No. 1222/2009.

Strada Asimmetrico tire performances



X «H» rated tire (210 km/h)

X «V» rated tire (240 km/h)

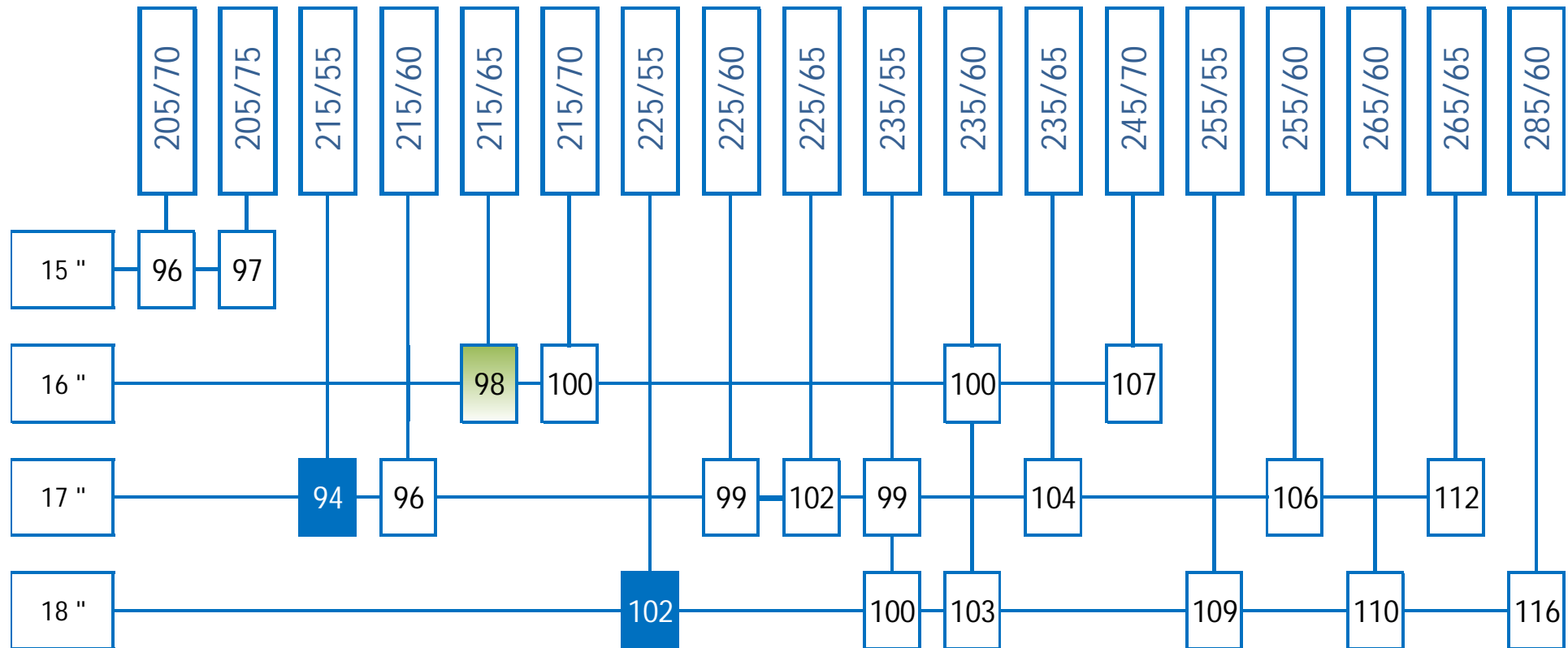
x Tire with two speed categories: «H» rated (210km/h) & «V» rated (240 km/h)

General use of Strada Asimmetrico tires



No.	Size	General use	No.	Size	General use
1	175/70R13	LADA, Hyundai Accent, Daewoo Nexia	16	205/65R16	Nissan Teana, Audi A4, Hyundai Sonata
2	175/65R14	LADA, Bogdan, Hyundai Getz	17	215/55R16	Ford Focus/Mondeo, VW Passat, Peugeot 308/408
3	175/70R14	VW Polo sedan, Nissan Almera, FIAT Albea	18	215/60R16	Toyota Camry, Skoda Yeti, Subaru Forester
4	185/60R14	LADA, Daewoo Nexia, Chevrolet Aveo/Lanos	19	225/55R16	Audi A4/A6, BMW 5 series, Mercedes E-class
5	185/65R14	LADA, KIA Spectra, Chevrolet Lacetti	20	225/60R16	Audi A8, Mercedes S-class, Citroen C5
6	185/70R14	Renault Logan/Sandero, Ford Focus, Opel Corsa	21	215/50R17	Opel Astra, Mazda 6, Chevrolet Cruze
7	185/55R15	LADA, Opel Corsa, Nissan Mirca	22	215/55R17	Nissan Teana, Toyota Camry, KIA Optima/Insignia
8	185/60R15	VW Polo sedan, Toyota Yaris, Geely MK	23	225/45R17	KIA Cee'd, Honda Civic, Hyundai i30
9	185/65R15	Hyundai Solaris, KIA Rio III, Renault Logan/Sandero	24	225/50R17	Opel Astra, Audi A5, BMW 5 series/X1
10	195/55R15	VW Polo sedan, Chevrolet Lacetti, Skoda Fabia	25	235/45R17	VW Passat, Ford Mondeo, Volvo S60
11	195/60R15	Toyota Corolla, Mitsubishi Lancer, Ford Fusion	26	245/45R17	Mercedes E-class/C-class, Audi A6, Lexus IS
12	195/65R15	Ford Focus, Mazda 3, Skoda Octavia, Renault Megane	27	225/45R18	Mazda 6, Opel Astra, KIA Optima
13	205/65R15	Renault Megane/Fluence, Hyundai Sonata	28	235/40R18	Ford Focus/Mondeo, Mazda 6, Mercedes C-class
14	205/55R16	Ford Focus, KIA Cee'd, Opel Astra, Toyota Corolla	29	255/45R18	Mercedes S-class, Audi A7
15	205/60R16	Chevrolet Cruze, Mitsubishi Lancer, Nissan Primera			

Bosco A/T tire performances



X «H» rated tire (210 km/h)

X «V» rated tire (240 km/h)

x Tire having two speed categories:
«T» rated (190 km/h) and «H» rated (210 km/h)

General use of Bosco A/T tires



No.	Size	General use	No.	Size	General use
1	205/70R15	Chevrolet Niva, Suzuki Jimny, Honda CR-V	11	235/55R17	VW Tiguan, Ford Kuga, BMW X3, Volvo XC70
2	205/75R15	Chevrolet Niva	12	235/65R17	VW Touareg, Volvo XC90, Audi Q5, BMW X5
3	215/65R16	Renault Duster, VW Tiguan, Nissan Qashqai	13	255/60R17	VW Touareg, Chevrolet TrailBlazer
4	215/70R16	Mitsubishi Outlander, KIA Sportage, Toyota RAV4	14	265/65R17	Toyota LC Prado, Mitsubishi Pajero
5	235/60R16	KIA Sportage, Suzuki Grand Vitara, Hyundai Tucson	15	225/55R18	Mitsubishi Outlander, Hyundai ix35, Nissan X-Trail
6	245/70R16	UAZ Patriot, Mitsubishi L200, KIA Sorento	16	235/55R18	KIA Sportage, Chevrolet Captiva, Opel Antara
7	215/55R17	Nissan Juke, Subaru Forester, Mitsubishi Outlander	17	235/60R18	Hyundai Santa Fe, Mazda CX-7, Audi Q5/Q7
8	215/60R17	Nissan Qashqai, BMW X3, Mitsubishi ASX	18	255/55R18	BMW X5, Mercedes M-class, Audi Q7
9	225/60R17	Nissan X-Trail, Hyundai X35, KIA Sportage	19	265/60R18	Toyota LC Prado, Mitsubishi Pajero, Infiniti FX
10	225/65R17	Toyota RAV4, Suzuki Grand Vitara, Honda CR-V	20	285/60R18	Toyota LC, Lexus LX