



We offer great opportunities  
to our partners!

Russian Federation

**SMOLENSK REGION**

[www.smolinvest.com](http://www.smolinvest.com)

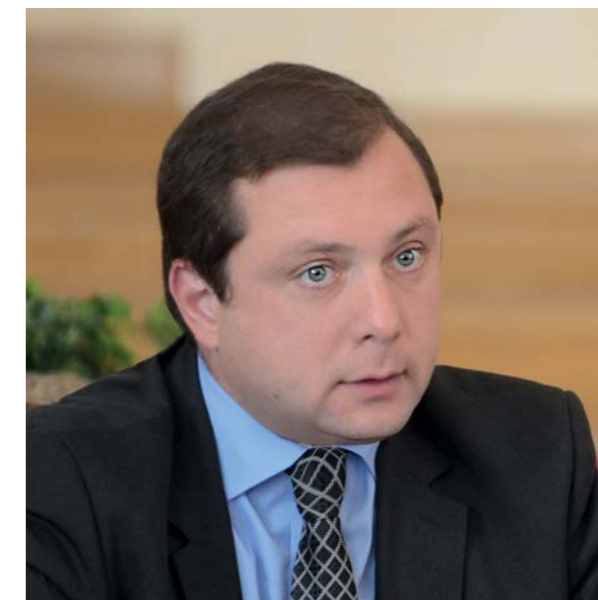
## Contents

02	03	04	06	07	08
	The welcome speech of the Governor of the Smolensk Region	Geographical location	Smolensk Region today	Transportation	Competitive edge
09	10	12	13	14	16
Support for small and medium sized enterprises	Smolensk Regional Fund for the Support of Entrepreneurship	State support for investment activity of big business	State support for investment activity of small and medium sized enterprises	Logistics complexes and terminals	Priority investment sites
18	19	20	21	22	24
State industrial park «Phoenix»	Industrial park «Safonovo»	Transportation and logistics industrial complex «Stabna»	Main priorities of the regional development	Industry	Agriculture
25	26	27	28	29	30
State support for agricultural producers	Education	Healthcare	Culture	Sport	Tourism



*Dear Ladies and Gentlemen!*

*Let me heartily greet You in our ancient and heroic land. I invite You to get a closer acquaintance with our region.*



The present business pages for investors will definitely provide You with the bright illustrations of various resources of our Smolensk Region.

I feel sure that the up-to-date overview of the regional potential will be of great interest for top managers, representatives of business elite, entrepreneurs, other specialists interested in the Smolensk Region.

Being the Western gate of Russia, Smolensk has a unique geographical location which creates the prerequisites necessary for increasing and implementing the investment potential of the region. Smolensk is an important transportation and communication hub with the shortest highways and railways running from Central Russia to Europe.

The vast territory and rich mineral resources, significant technological and intellectual potential make the region attractive for investors, Russian and international companies and financial organisations.

The Smolensk Region can boast its congenial conditions for stable economic development.

The Administration of the Smolensk Region has worked out a clear investment policy aimed at the improvement of the regional investment climate and provision of investment safety. We provide assistance for those partners who strive to establish mutual relations in various business fields.

Our region is open to those partners who pursue serious and positive interests. We express our readiness for widening cooperation in industrial, technological, investment and scientific spheres.

I believe that the Smolensk Region will always be a hospitable home for investors. I wish all business community prosperity and successful implementation of investment projects.

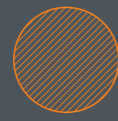
Governor  
of the Smolensk Region

A.V. Ostrovskiy

## Geographical location

The Smolensk Region is an important transportation and communication hub

68 million people are currently living within a 500-km radius from Smolensk



## Two transport corridors

### East-West



M-1 «Belarus»



A-101 «Moscow-Bobruisk»



major railways



The Yamal-Europe gas pipeline

### North-South



A-141 «North-South»



BPS - II - Baltic Pipeline System



major railways

Tallinn

Riga

Vilnius

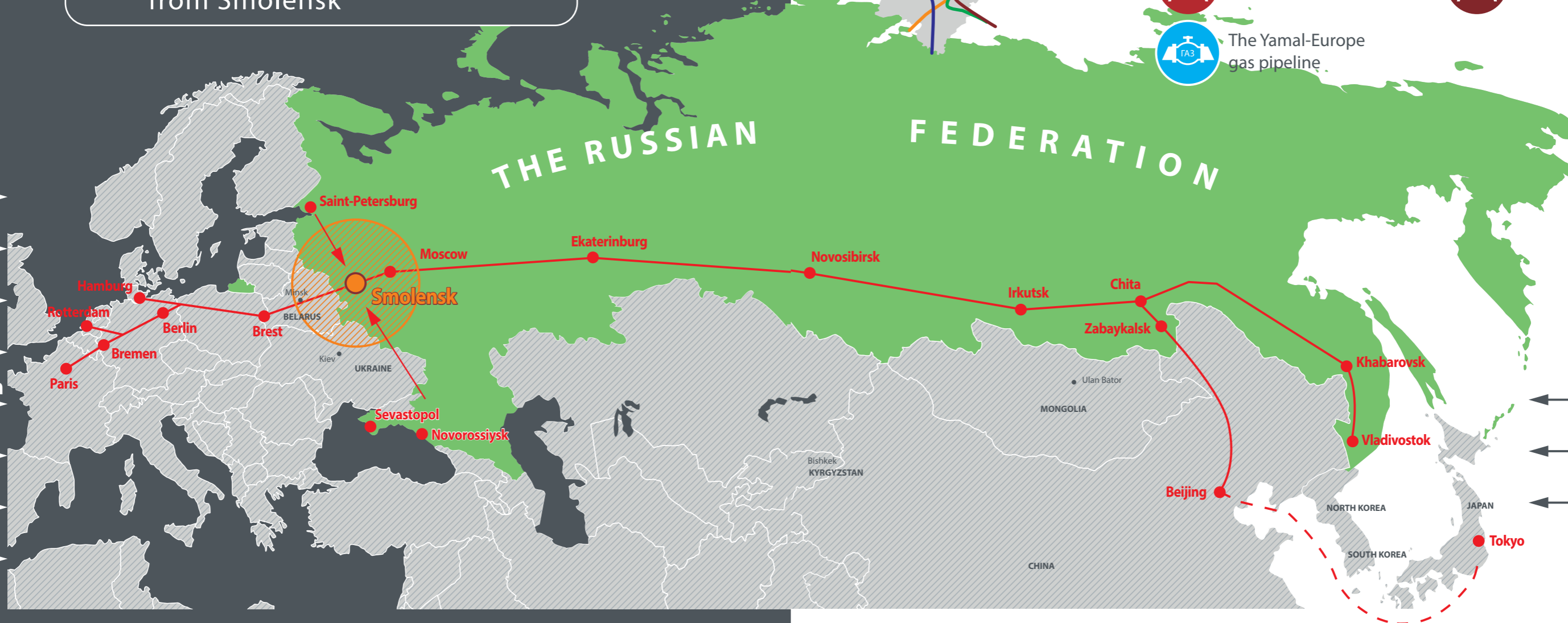
Hamburg

Rotterdam

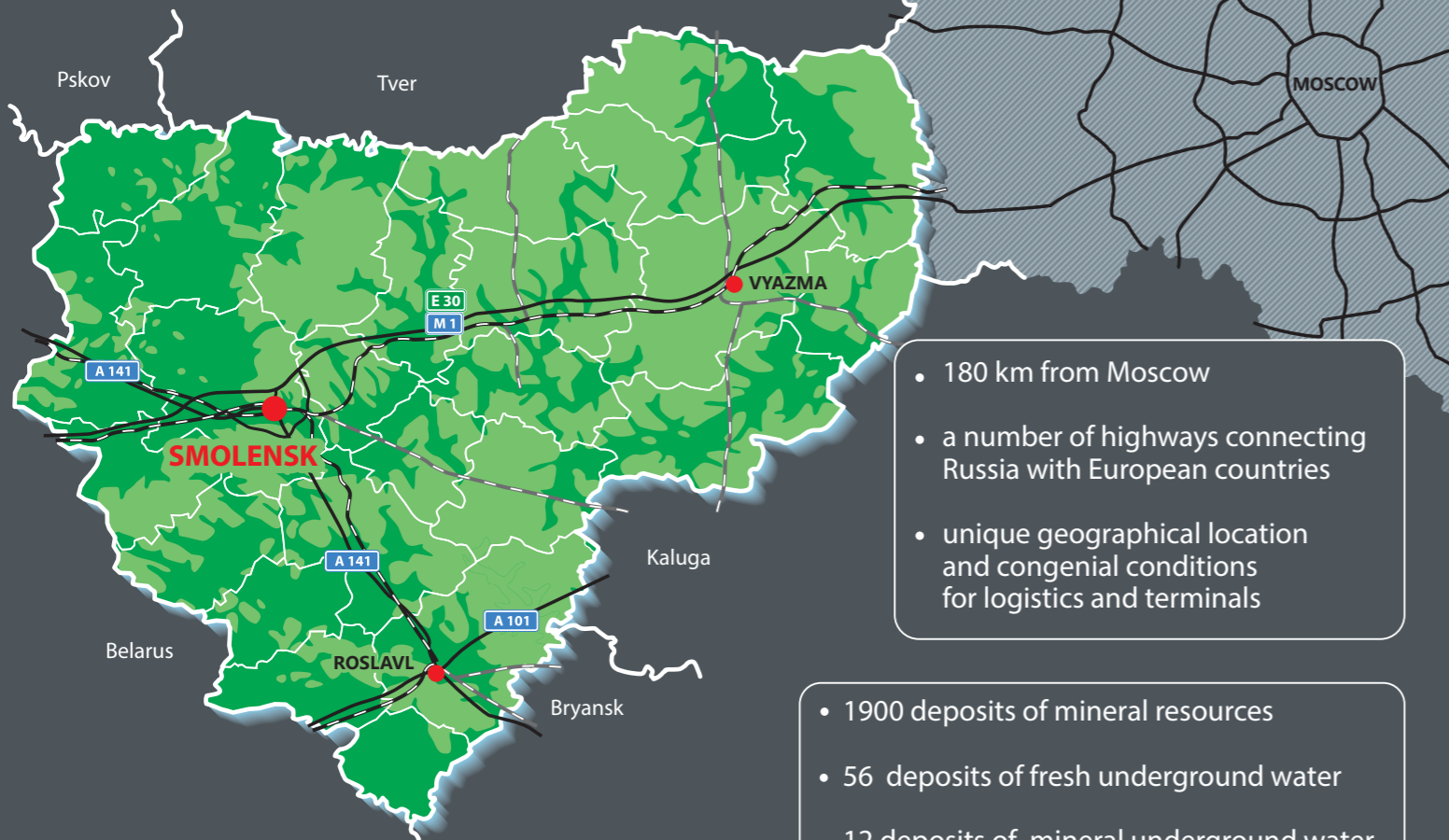
Paris

Berlin

Bremen



## Smolensk Region today



- 180 km from Moscow
- a number of highways connecting Russia with European countries
- unique geographical location and congenial conditions for logistics and terminals

- 1900 deposits of mineral resources
- 56 deposits of fresh underground water
- 12 deposits of mineral underground water

35% Russian and 75% international goods from Western Europe are transported through the territory of the Smolensk Region



total area:  
49 800 km<sup>2</sup>



population:  
1 000 000 people



25 municipal districts



2 towns



10 700 km of highways



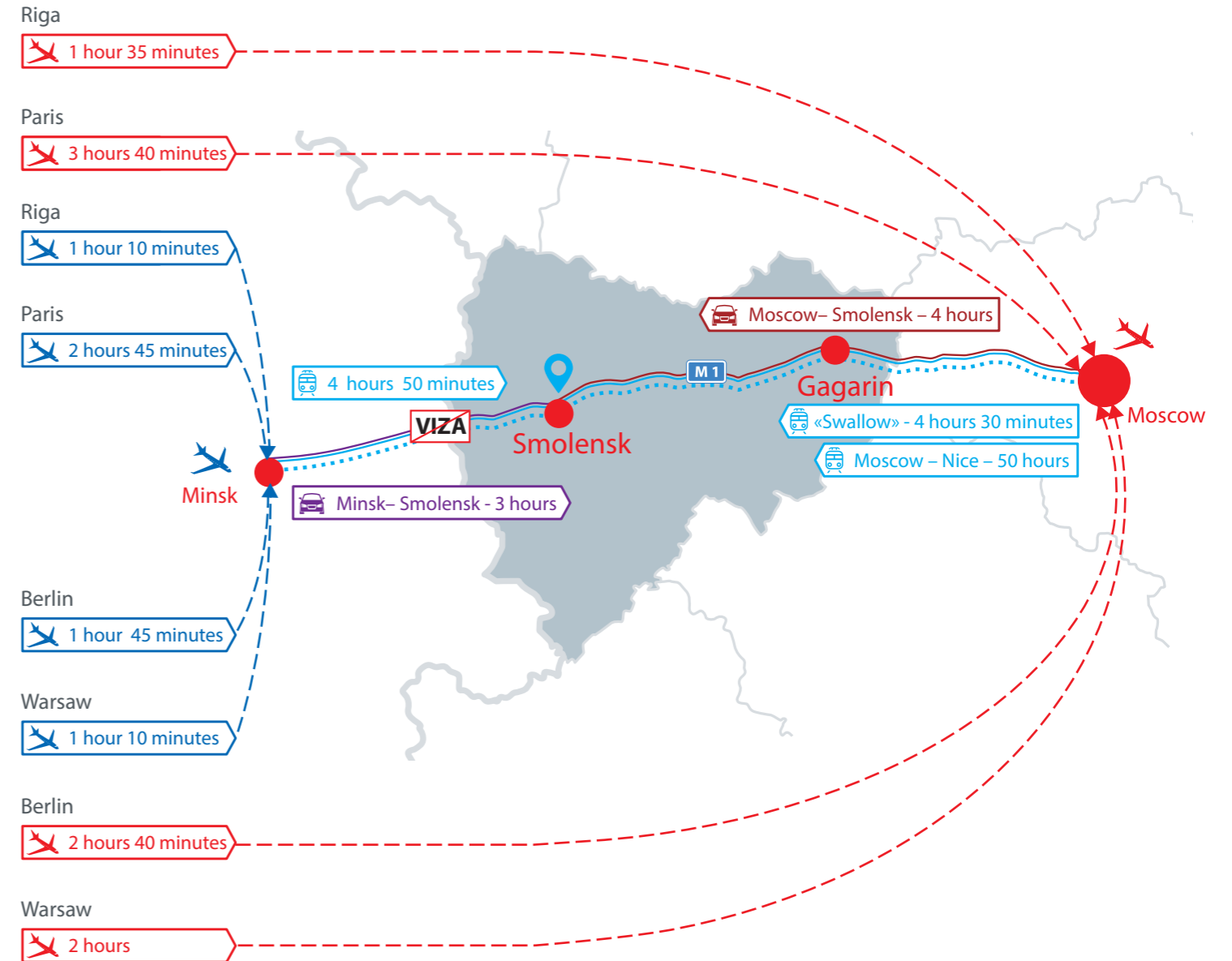
1 259 km of railways



transportation hubs:  
Smolensk,  
Vyazma,  
Roslavl

## Transportation

**HIGHWAY M-1 "BELARUS"**  
SMOLENSK - MINSK - 348 km  
SMOLENSK - MOSCOW - 395 km  
GAGARIN - MOSCOW - 180 km



# Competitive edge of the Smolensk Region



# Provision of state support for small and medium sized enterprises



**INVESTMENT PORTAL OF THE SMOLENSK REGION**

[www.smolinvest.com](http://www.smolinvest.com)

## INVESTMENT DEVELOPMENT CORPORATION

Congenial investment climate.  
Attraction of investment.  
Launch of investment projects.  
Creation of investment sites.  
Investment management.



Business Support on Your Doorstep

[www.eicc-smolensk.ru](http://www.eicc-smolensk.ru)

**REGIONAL INTEGRATED CENTRE (RIC) IN THE SMOLENSK REGION**

Information support and consulting services for the regional enterprises on the establishment of business contacts with partners from other Russian regions and abroad.



**SMOLENSK REGIONAL FUND FOR SUPPORT OF ENTREPRENEURSHIP**

[www.sofpmp.ru](http://www.sofpmp.ru)

Microfinance, consulting services on business development.

**GUARANTEE FUND**

Provision of securities for small and medium sized enterprises.

**AGENCY OF LOAN SECURITY**

[www.acgrf.ru](http://www.acgrf.ru)

Initiation, management and development of the national guarantee system ensuring the dynamic development of the entrepreneurship.

**INDUSTRY DEVELOPMENT FUND**

[www.rftr.ru](http://www.rftr.ru)

The Fund stimulates modernization of Russian industry and encourages the production of competitive products which provide import substitution.

**FUND FOR SCIENTIFIC AND TECHNOLOGICAL SUPPORT OF SMALL ENTERPRISES**

[www.fasie.ru](http://www.fasie.ru)

The fund implements the programmes of innovative development designed to set up new and improve existing high-tech companies, increase their profits, attract investment, and create new work places.



State support for small and medium sized enterprises



SMOLENSK REGIONAL FUND FOR SUPPORT OF ENTREPRENEURSHIP

### MICRO-LOANS



DEPENDING ON THE KIND OF ECONOMIC ACTIVITY

## GUARANTEES FOR SMALL AND MEDIUM SIZED ENTERPRISES



### Microfinance

Loans for entrepreneurs and companies:  
- 10 000 - 1 000 000 roubles;  
- 1-3 years depending on the type of economic activity.



for companies working in agriculture, industrial production and service.



for companies working in other spheres including trade.



### To receive a bank loan

- the borrower submits a limited number of documents
- the loan is provided within 3-5 day
- no pledge security
- early credit repayment



### Guarantee fund

Guarantees upto 20 mln roubles for bank loans and letters of credit no longer than for 5 years.

- the commission for guarantee provision does not exceed 1/3 of the key interest rate defined by the Central Bank of Russia
- covers upto 50% of the loan or the letter of credit
- decisions are made within 7 days

To be eligible for the Fund loan/guarantee the applicant should:

- be qualified as a small or medium sized enterprise (Federal law 209-FZ issued on July 24<sup>th</sup>, 2007)
- be registered as a tax payer and function in the territory of the Smolensk Region
- not have any debts into the regional budget

Smolensk Regional Fund for Support of Entrepreneurship is accredited by the OJSC «Non-bank depository and credit company «Agency of credit guarantees»



Smolensk Engels st. bld. 23



+7 (4812) 610-509, 777-077



E-mail: sofmp@rambler.ru



www.sofmp.ru

## State support for investment activity of big business

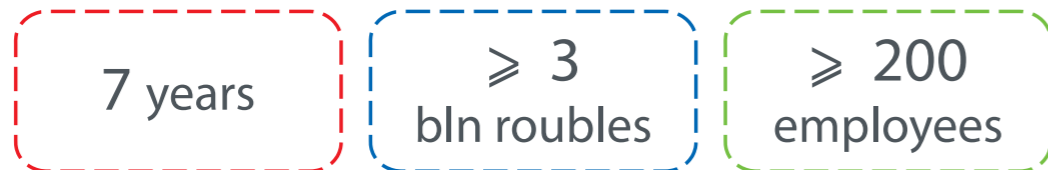


### TAX RELIEF FOR INVESTORS



### SUBSIDIES

Subsidies in the amount of corporate income tax are annually given for reimbursement of expenses incurred while implementing PRIORITY investment projects



#### Priority economic activities:

- food production
- machinery and technical equipment manufacturing
- electrical facilities, electronic and optical equipment manufacturing
- vehicles and transport facilities manufacturing
- pharmaceutical goods production

### OTHER KINDS OF SUPPORT:



Investment project management



Project design and business counselling



Information and administrative support

## State support for investment activities of the small and medium enterprises



### TAX RELIEF FOR INVESTORS



### SUBSIDIES



### OTHER KINDS OF SUPPORT:



Investment project management



Project design and business counselling



Information and administrative support

## Logistics centres and terminals



CLT «KRASNINSKY»  
LLC «RHENUS-TERMINAL»

**LOCATION:** M-1 motorway, 3 km from the Belarus border. Smolensk region, Krasninsky district, Krasnaya Gorka village, Zarechnaya Str., Bld. 2.

**3 KM FROM THE BELARUS BORDER**

**400 PARKING PLACES**

**WAREHOUSE FOR TEMPORARY STORAGE - 2500 M2**

**ONE OF THE LARGEST TERMINALS IN RUSSIA**

**The 1st WAREHOUSE BUILT BY AN INTERNATIONAL FORWARDING AGENT IN THE SMOLENSK REGION**

[www.ru.rhenus.com](http://www.ru.rhenus.com)



CLT «KRASNOYE»  
LLC «ALFA-TRANS»

**LOCATION:** Smolensk region, 454 km on the M-1 motorway, 2 km from the Belarus border.

[www.alfa-trans.ru](http://www.alfa-trans.ru)



CLT «STABNINSKY»  
LLC «ALFA TRANS TERMINAL»

**LOCATION:** Smolensk region, Stabna village, 6 km from M-1 motorway.

**700 CARGO VEHICLES PER DAY**

**GENERAL COMPETENCE TERMINAL**

**TERMINAL OF EXCISE DUTY**

**ONE OF THE LARGEST TERMINALS IN RUSSIA**

**PARTICIPANT OF THE FOLLOWING PROJECTS:  
"SIMPLIFIED CUSTOMS CORRIDOR"  
RUSSIA – TURKEY, RUSSIA – ITALY**

[www.alfa-trans.ru](http://www.alfa-trans.ru)



CLT «SMOLENSKY»  
LLC «TRANSIT-C»

**LOCATION:** Smolensk, Lavochkina Str. 105.



CLT «RUDNYANSKY»  
LLC «EUROTRANSSEVIS»

**LOCATION:** Smolensk region, Rudnya, 14 Let Oktyabrya Str.  
• warehouse: 3000,00 m<sup>2</sup>  
• convenient road from the Baltic and North European countries and from Ukraine and Belarus thanks to its location on the Bryansk – Smolensk – Vitebsk motorway (A-141)  
• outdoor area of the warehouse for temporary storage - 75 000m<sup>2</sup>



CLT «ROSLAVLSKY»  
LLC «ROSLAVL-TERMINAL»

**LOCATION:** Smolensk region, Roslavlsky district, Roslavl, Karl Marks Str. 166.

• warehouse: approximately 2,5 ha  
• parking for 140 large cargo vehicles



WAREHOUSE FOR TEMPORARY STORAGE  
«KATYNSKY TERMINAL»

**LOCATION:** Smolensk region, Smolensky district, Nikolskaya village, Dorozhnaya Str. 3.



WAREHOUSE FOR TEMPORARY STORAGE  
«ALFA-LOGISTIK»

**LOCATION:** Smolensk region, Yartsevo (329 km on M-1 motorway)



WAREHOUSE FOR TEMPORARY STORAGE  
ZAO «INVEST MULTIMODAL»

**LOCATION:** Smolensk region, Yartsevo (329 km on M-1 motorway)



WAREHOUSE FOR TEMPORARY STORAGE  
LLC «VYAZEMSKY TERMINAL»

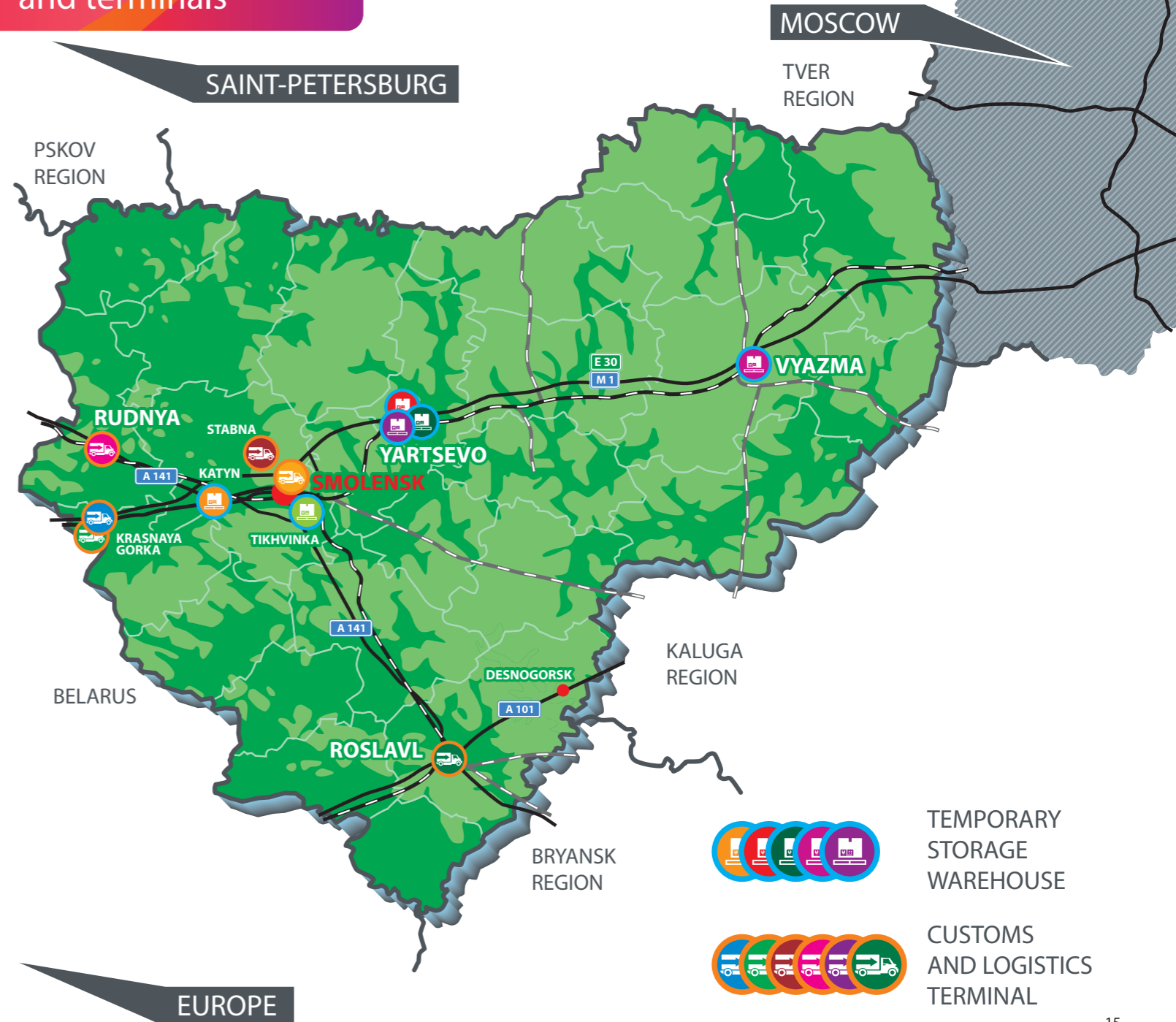
**LOCATION:** Smolensk region, Vyazma, Elevatornaya Str. 12



WAREHOUSE FOR TEMPORARY STORAGE  
LLC «ELTRANS+»

**LOCATION:** Smolensk region, Yartsevo, 2 Mashinostroitel'naya Str., Bld. 5/3

## Logistics complexes and terminals



TEMPORARY STORAGE WAREHOUSE



CUSTOMS AND LOGISTICS TERMINAL



## Priority investment sites

--- Reserve Land\*

--- Agricultural Land\*

\* Possible land rezoning

- 1 «Arhipovka»  
20,87 ha investment site
- 2 «Tishino»  
43,8 ha investment site
- 3 «Rudnya»\*\*  
1005 ha investment site
- 4 «Berezhnyany»  
4 ha investment site
- 5 «Velyuzhino»  
22 ha investment site
- 6 «Kamenka»  
64 ha investment site
- 7 «Gagarin»  
106,28 ha investment site
- 8 «Lonnitsa»  
8,24 ha investment site

--- Industrial Land

--- Settlement Land

\*\* Possible technological connection to power grid facilities less than 50 MW

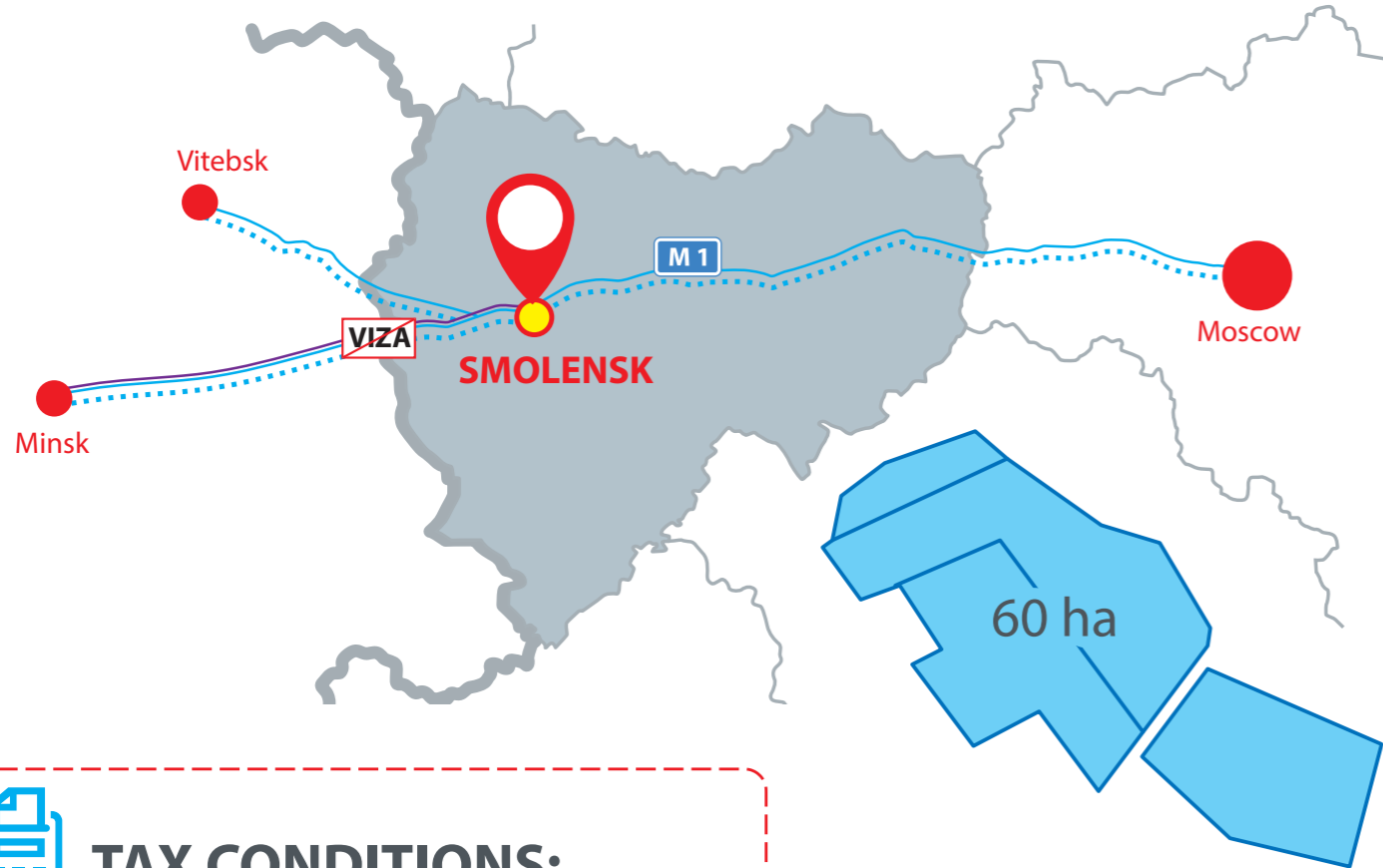
- 9 «Resurs»\*\*  
52,5 ha investment site
- 10 «Astapkovichi»\*\*  
110,3 ha investment site
- 11 «Kardymovo»  
6 ha investment site
- 12 «Buda»  
25 ha investment site
- 13 «Krasnaya Gorka»  
4,57 ha investment site
- 14 «Smolenskaya»  
7,1 ha investment site
- 15 «Kovalyovka»  
135 ha investment site
- 16 «Belkino»  
400 ha investment site

## Priority investment sites



«PHOENIX»  
State industrial  
park

- highly qualified specialists
- complex engineering infrastructure (land plots sized 0,5 - 10 ha)
- congenial conditions for transportation and logistics
- attractive prices



**TAX CONDITIONS:**

- ✓ PROFITS TAX
- ✓ LAND TAX
- ✓ PROPERTY TAX
- ✓ TRANSPORT TAX

**15,5%**

**0%**

Modern production facilities (4-5<sup>th</sup> hazard class):

- metal processing
- machine manufacturing
- production of metal and plastic goods
- consumer goods industry
- food industry



«Safonovo»  
Industrial park

SMOLENSK COMPOSITE CLUSTER

[www.technopark67.ru](http://www.technopark67.ru)



**TAX CONDITIONS:**

- ✓ PROFITS TAX
- ✓ LAND TAX
- ✓ PROPERTY TAX
- ✓ TRANSPORT TAX

**15,5%**

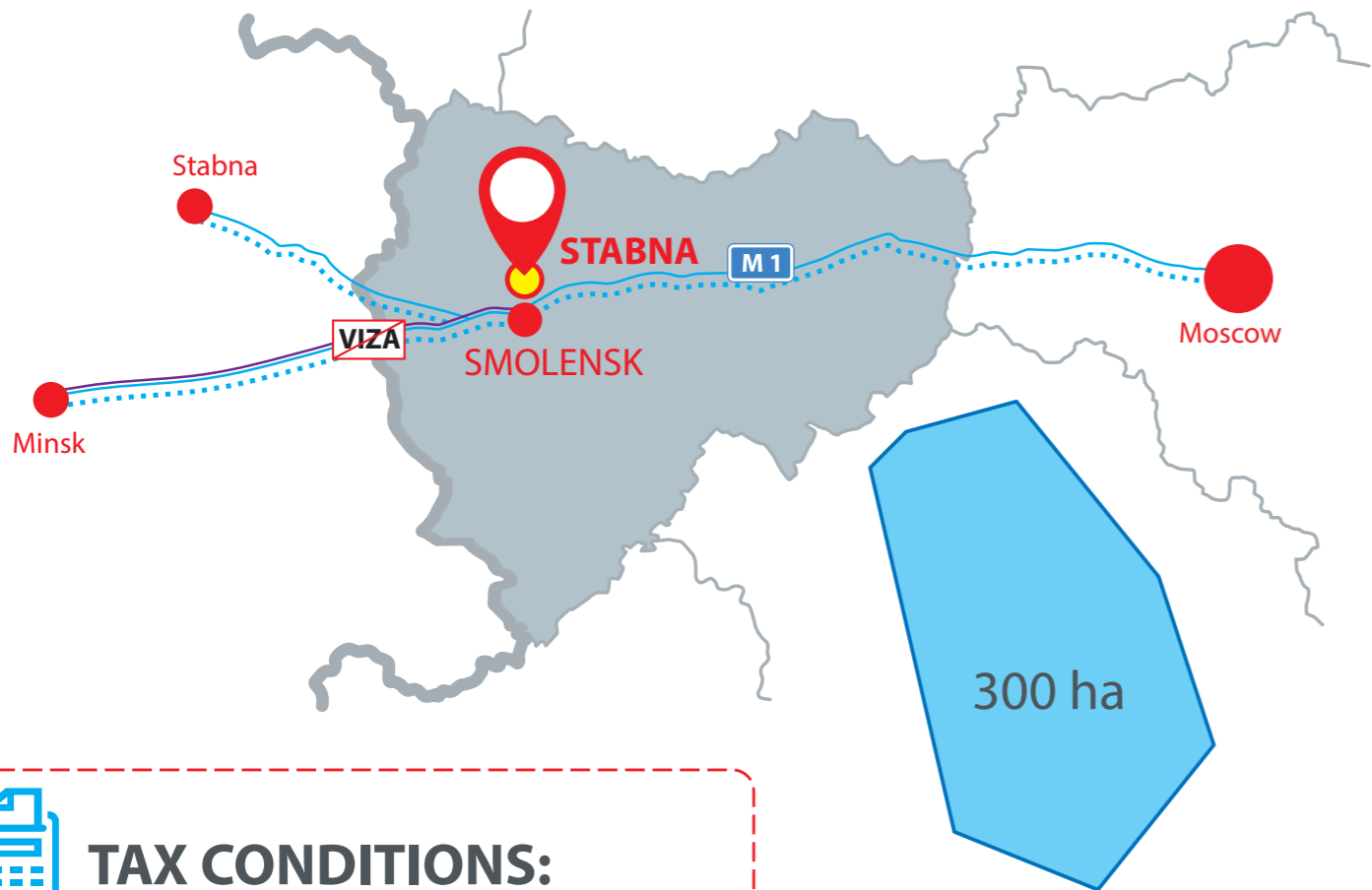
**0%**

Modern production facilities (2-5<sup>th</sup> hazard class):

- production of composites
- chemical production
- educational centre
- experimental station for growing hemp and flax

**STABNA**  
Transportation  
and logistics complex

[www.stabna.ru](http://www.stabna.ru)



**TAX CONDITIONS:**

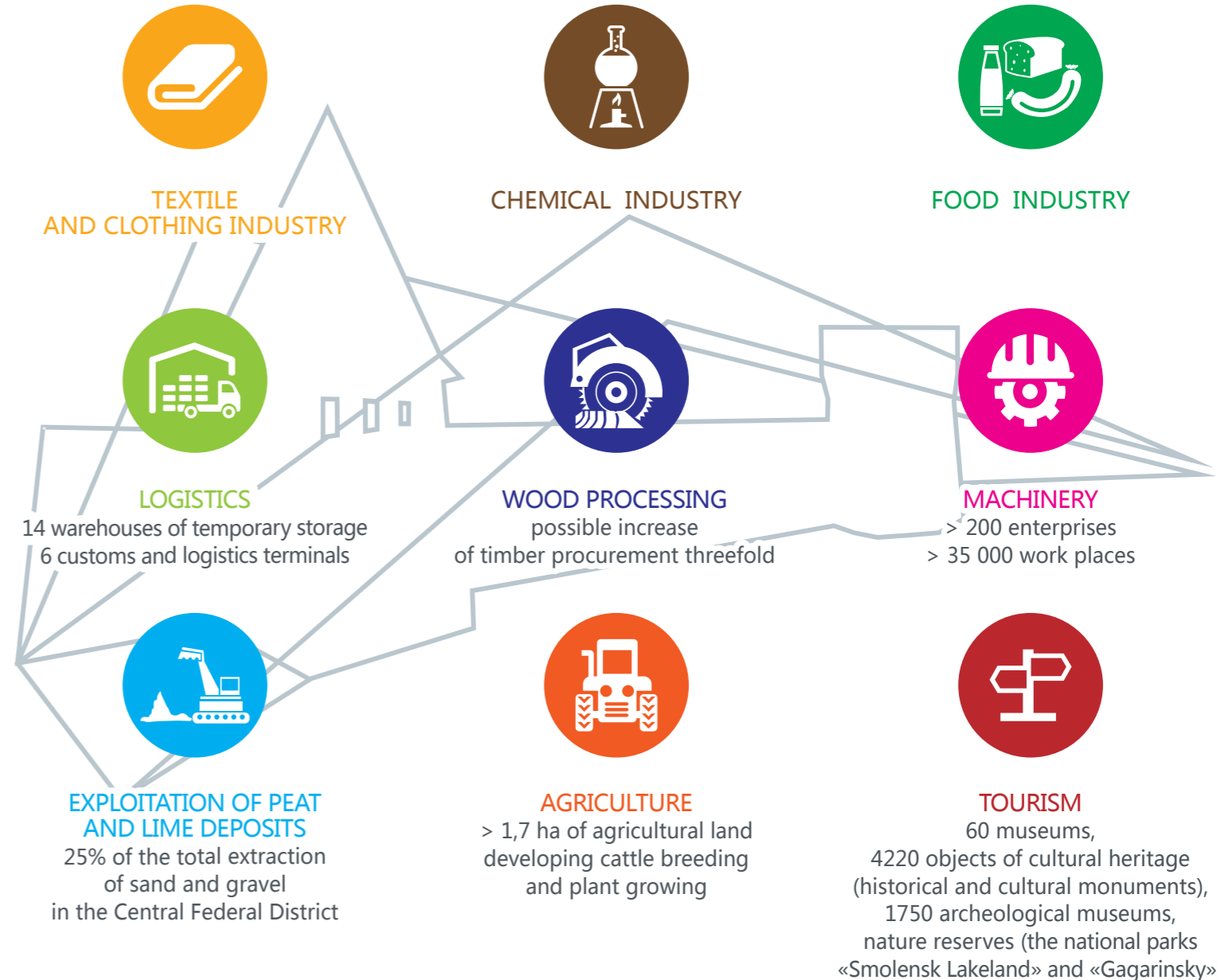
**15,5%**

**0%**

- ✓ PROFITS TAX
- ✓ LAND TAX
- ✓ PROPERTY TAX
- ✓ TRANSPORT TAX

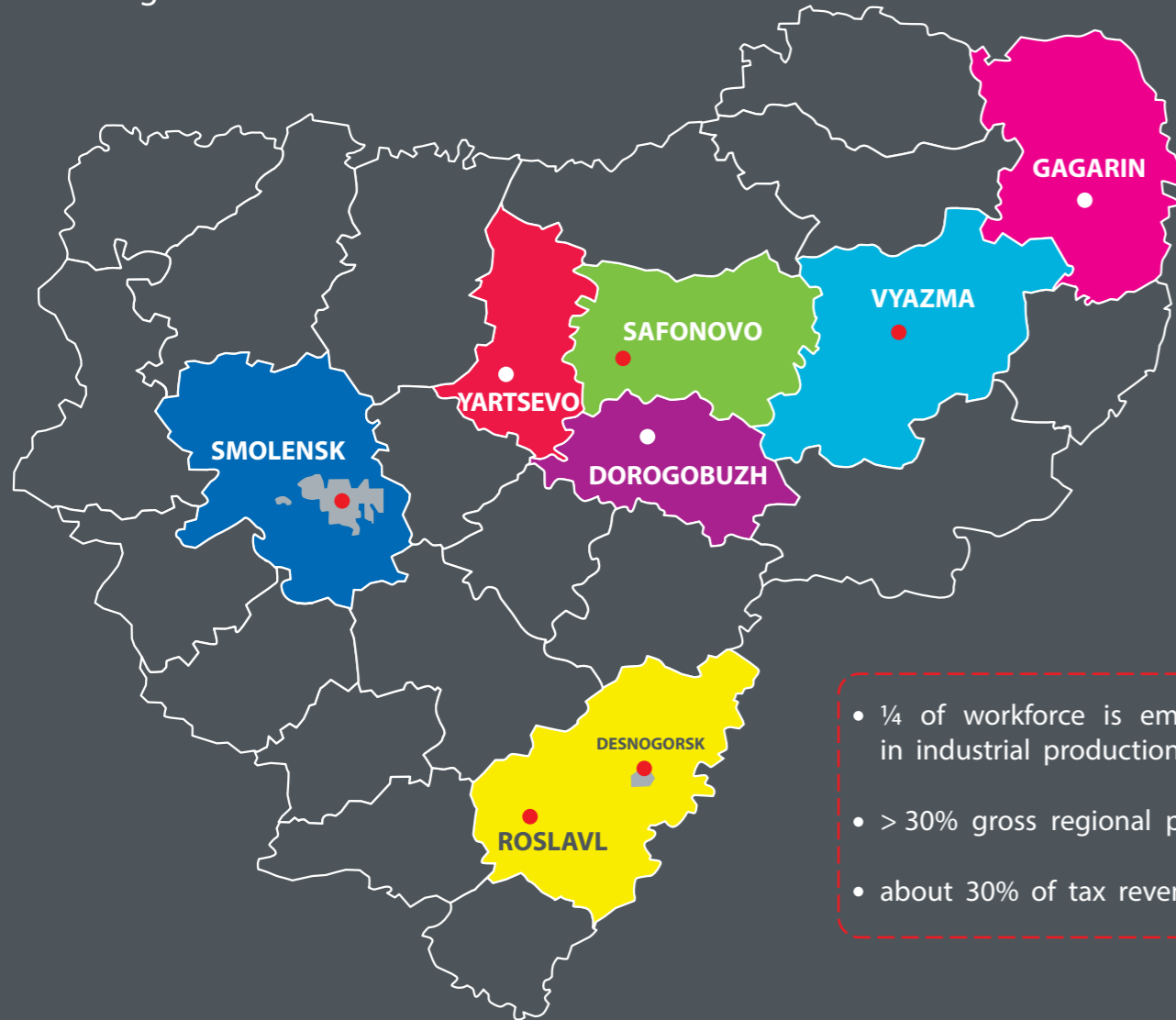
- Excise Customs Terminal
- Customs Terminal of General Competence
- Phyto-control
- Veterinarian Control
- Customs Clearance of Goods, Materials and Accessories
- "Green customs corridor" for Russia – Turkey, Russia – Italy.

**Development priorities**



## Industry

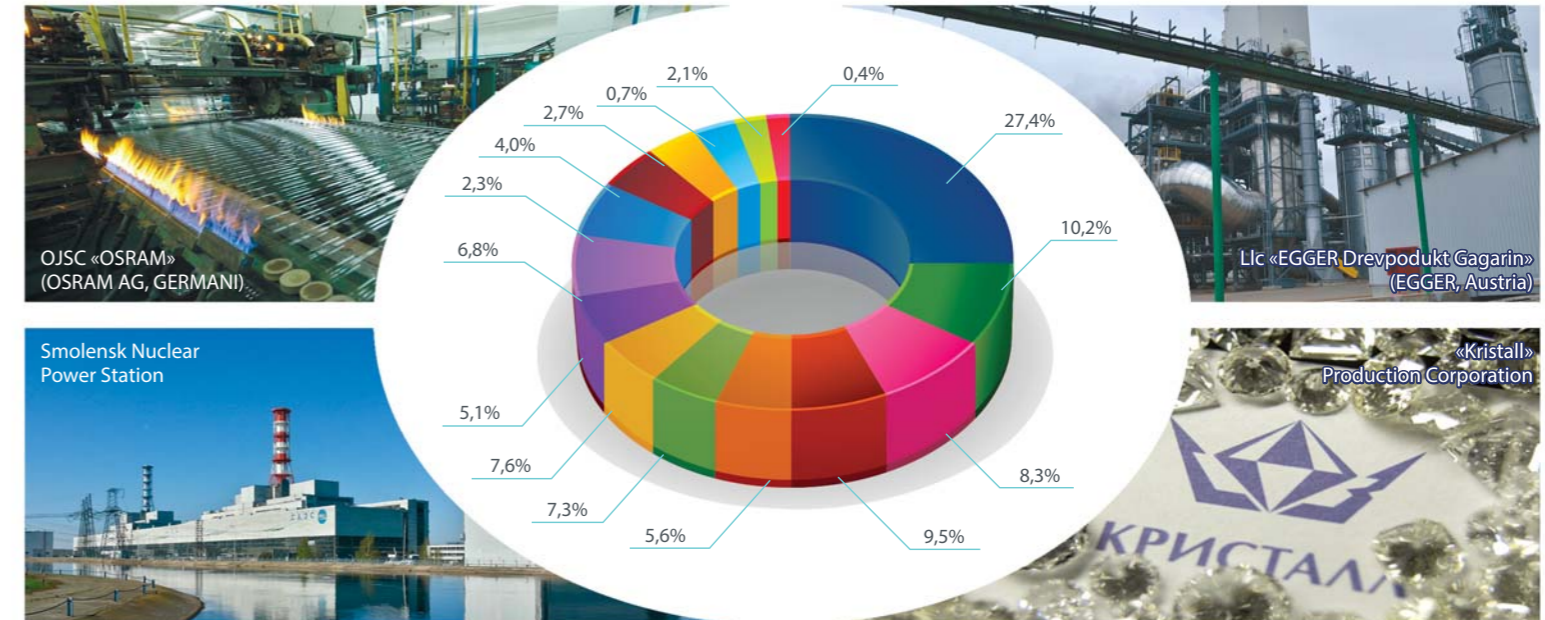
The Smolensk Region is one of the industrial regions of Central Russia



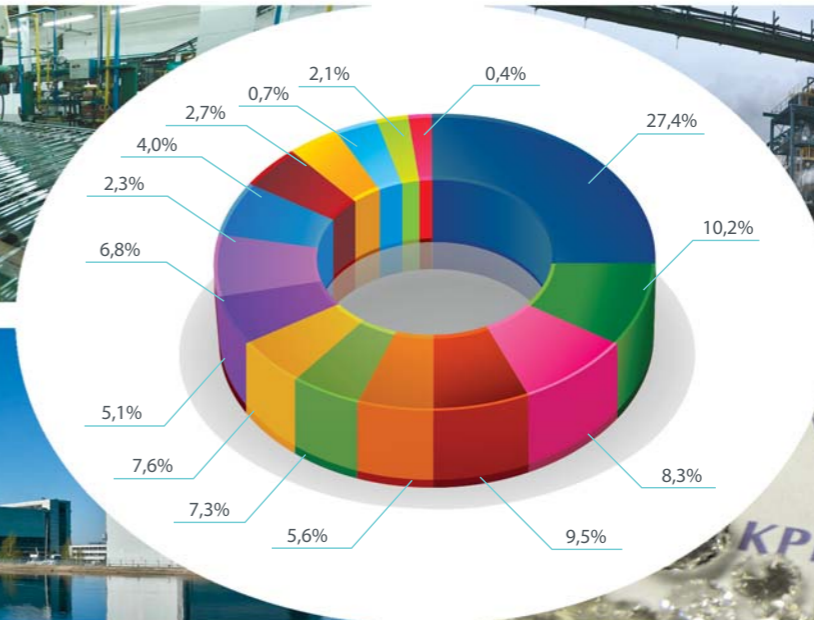
- ¼ of workforce is employed in industrial production
- > 30% gross regional product
- about 30% of tax revenues

Industrial centres, manufacturing over 90% of the total volume of industrial products

## Sectoral structure of GNP



- Production and distribution of electric power, gas and water
- Chemical industry
- Food industry including production of alcohol and tobacco
- Electrical equipment manufacturing
- Jewellery production
- Transportation and communication
- Metallurgical production and metalwork
- Production of non-metal mineral commodities
- Production of rubber and plastic goods
- Machinery manufacturing
- Wood processing
- Textile and clothing
- Extraction of mineral resources
- Cellulose and paper manufacturing
- Leather production and shoe making



## INVESTMENT PROJECTS IN AGRICULTURE

### Agricultural complex «MIRATORG»

- the company plans the construction of four cattle farms for meat production and a logistics centre;
- the amount of investment is about 2 bln roubles;
- 200 work places.

### ZAO «Zolotaya Niva», Safonovsky District completed

- the construction of the dairy complex for 1200 Holstein-Friesian cows;
- the expansion of the dairy complex upto 1800 cows;
- the construction of a dairy complex for 4800 cows, mixed cattle feed facilities and an elevator in the Dorogobuzhsky District.

### Agribusiness "Nasha Zhitnitsa", Gagarinsky District

- the investor launched a new investment project on the land development of 8 thousand ha of fallow land;
- the investor plans the construction of a modern complex for processing and storage of corn and a milk complex for 1200 cows.

### Llc «Gagarin-Ostankino», Gagarin

- construction of meat processing facilities;
- the processing capacity is 150 tons of pork per shift.

### Llc «Krol and K», Gagarinsky District

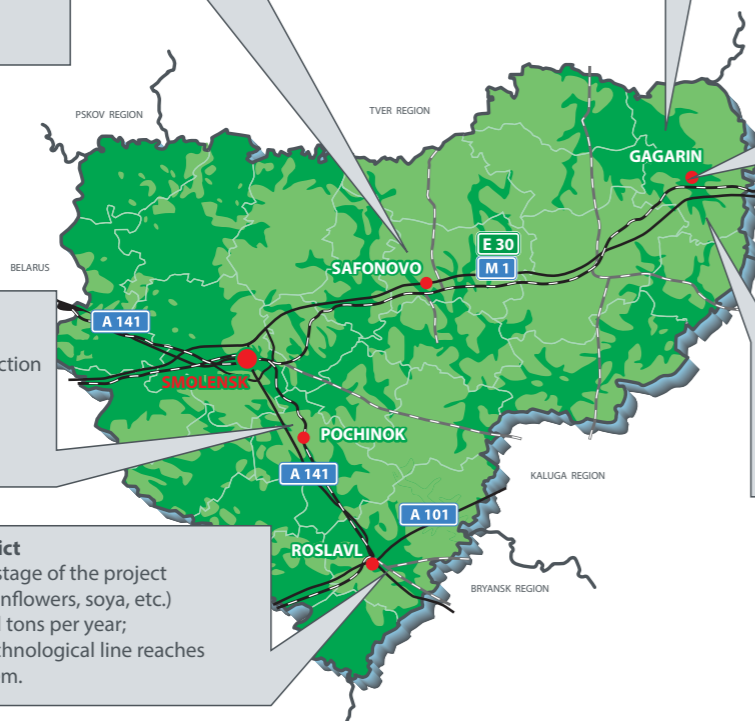
- the investor completed the construction of a rabbit farm for 3249 doe rabbits;
- the construction of 4 hangars for 4400 doe rabbits.

### Llc «Smolenskoe pole», Pochinkovsky District

- the investor continues the construction of the pig breeding farm for 165 thousand pigs;
- the present pig stock includes 101,1 thousand pigs.

### Llc «Grainlux», Roslavsky District

- the investor completed the first stage of the project on processing oil plants (rape, sunflowers, soya, etc.) with the capacity of 60 thousand tons per year;
- at present the capacity of the technological line reaches up to 250 tons of oil seed per diem.



- > 1,7 mln ha of agricultural lands
- 280 agricultural businesses
- 200 farmers and individual entrepreneurs
- 178 thousand people with private homesteads

### PRIORITIES OF AGRICULTURAL POLICY:

- production increase
- competitiveness and congenial conditions for agricultural goods on the market
- financial sustainability of agricultural producers
- complex development of rural territories

## State support of agribusiness

## SUBSIDIES

### PLANT GROWING

Partial reimbursement of the credit interest paid to the Russian credit organisations and loans received from agricultural consumers' co-operative organisations

Partial reimbursement of the expenses on the purchase of top-quality seeds

Target support for plant growing producers

Production of fiber flax (stock and straw)

Partial reimbursement of technical and technological modernization of flax production, and primary flax processing

Partial reimbursement of the insurance payment under the agreement of the agricultural insurance

Partial reimbursement of direct expenses on construction and modernization of potatoes and other vegetables storage facilities

Partial reimbursement of direct expenses on construction and modernization of green-houses

Target support of potatoes and open land vegetables growing

### CATTLE BREEDING

Partial reimbursement of the interest paid to the Russian credit organisations and loans received from agricultural consumers' co-operative organisations

Partial reimbursement of the insurance payment under the agreement of the agricultural insurance

Reimbursement of the expenses on breeding livestock except beef farming.

Keeping breeding bulls for dairy and beef farming

Compensation per 1 litre of the sold milk

Partial reimbursement of the direct expenses on construction and modernization of milk farms

### SPECIALISTS

Social transfers for construction (purchasing) of housing in rural areas

Regional support of the specialists working in the agricultural sector of the Smolensk Region:

- a state lump-sum provided for young specialists
- monthly payments for young specialists working in agricultural companies



## TAX EXEMPTIONS

0 %  
for transport

(tractors, self-propelled headers, agricultural vehicles registered by the agricultural companies and used in agribusiness)

# Education

## PRE-SCHOOLING

## SCHOOL EDUCATION



279 educational institutions  
35,3 thousand people

403 schools  
80,8 thousand people

66 centres  
53 thousand people

vocational: 32 schools  
128 professions



higher education:  
33 institutions  
80 majors



## ADDITIONAL EDUCATIONAL PROGRAMMES

## PROFESSIONAL EDUCATION

# Healthcare



**73**

## 73 REGIONAL STATE HEALTHCARE INSTITUTIONS

- Regional Clinical Hospital
- Regional Children's Clinical Hospital
- Veterans' Hospital
- Emergency Care Hospital
- Perinatal Centre
- Centre for Prevention and Treatment of AIDS and Infectious Diseases
- Blood Centre
- Institute for Pathology



«FEDERAL CENTRE FOR TRAUMATOLOGY, ORTHOPEDICS AND PROSTHETICS»  
IS EQUIPPED ACCORDING TO THE WORLD MEDICAL STANDARDS



# Culture

## CULTURAL LIFE



Tvardovsky Regional Library is among the best regional libraries in the country



Smolensk Regional Philharmonia

2013 – 1150<sup>th</sup> anniversary of Smolensk

Griboedov State Drama Theatre



Tenishevs Cultural and Exhibition Centre



535 LIBRARIES

60 MUSEUMS

4 PARKS

3 THEATRES

CULTURAL AND EXHIBITION CENTRE

PHILHARMONIA

# Sport

## RECREATIONAL AND SPORTS FACILITIES

2417 sports facilities are visited by over 56 thousand people:

25 STADIUMS

4 ICE PALACES

41 SWIMMING POOLS

20 SKIING COMPLEXES



### SPORTS AND PHYSICAL EDUCATION INSTITUTIONS:

- Smolensk State Academy of Physical Culture, Sport and Tourism
- Smolensk State School of the Olympic Reserve
- Smolensk College of Technology and Sport
- Gagarinsky Teaching School
- Training Centre of the Smolensk Region Teams
- 10 specialised sports schools of the Olympic reserve for children, 31 sports schools for children, 21 sports clubs

The Smolensk Region annually holds special winter and summer olympiads, regional competitions in track and fields, skiing, etc. for disabled children. Being members of regional teams, they also take part in Russian national and international competitions.

The «Smolensk Ring» motor-racing track in Verkhnedneprovsky, Dorogobuzh meets the international standards of circuit races. The track is 3357 m long and 12-15 m wide. [www.smolenskring.ru](http://www.smolenskring.ru)

## Regional Tourism

114  
tourist agencies

60  
museums

4220  
cultural sites

1750  
architectural sites



Yuri Gagarin (1934-1968), born in the Smolensk region, is the first man in space

### PRIORITY GUIDELINES



educational and event tourism



recreational tourism



religious and pilgrimage tourism



agricultural and ecological tourism



wellness tourism

### EDUCATIONAL TOURISM



THE OLDEST KIND OF TOURISM DYNAMICALLY DEVELOPING THANKS TO A RICH AND DIVERSE CULTURAL AND HISTORICAL HERITAGE



### EVENT TOURISM

FASCINATING SPECTACULAR SHOWS:



The Russian Touring Car Championship and «Slavic Cup» at the «CAR dymovo» motor-racing track (Kardymovsky district)



International Historical Reenactment and Slavic Culture Festival «Gnezdovo – 2014» (Smolensk)



International Touristic Festival «Solovyova Crossing» (Kardymovsky district)

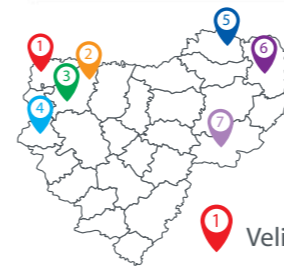


Military and Historical Festival «Reenactment of the Smolensk Battle at Lubino in 1812» (Kardymovsky district)

## Regional tourism



Patriarch Kirill of Moscow and All Russia. From 26 December 1984 - Archbishop of Smolensk and Vyazma. Prior to the patriarch enthronement - Metropolitan of Smolensk and Kaliningrad.



Velizh



Przhevalskoye



Demidov



Rudnya



Sychevka



Gagarin



Ugra

## RELIGIOUS TOURISM AND PILGRIMAGE

The main centers: Smolensk, Vyazma, Boldino.



Assumption Cathedral, Smolensk, 1677



Church of Archangel Michael (Svirskaya), Smolensk, 1180-1197

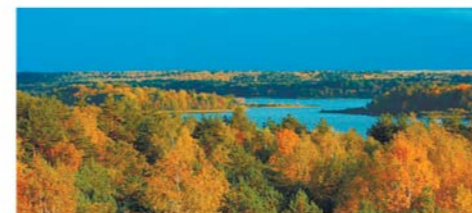


Holy Trinity Boldino Monastery of St. Gerasim, 1530



Church of Odigitria (1638), Monastery of John the Precursor, Vyazma

### ECO-TOURISM IN THE SMOLENSK REGION



NATIONAL PARK "SMOLENSKOYE POOZERYE" ("SMOLENSK LAKELAND")

- 35 unique glacial lakes
- extensive network of hiking, water and cycling tourist routes and ecological paths
- dozens of sites for camping and recreation
- recreational facilities and accommodation



NATIONAL PARK "GAGARINSKY"

- close proximity to the Moscow region
- the construction of the "Vazuza & Yauza" touristic cluster



UGRA PORECHYE

The Ugra river is one of the most popular areas for water and recreation tourism in Central Russia.



# INVEST IN YOUR FUTURE!

**Governor of the Smolensk Region, Reception:**

tel: +7 (4812) 38-66-11, факс: +7 (4812) 38-68-51,  
e-mail: [region@admin.smolensk.ru](mailto:region@admin.smolensk.ru)  
[www.admin-smolensk.ru](http://www.admin-smolensk.ru)

**Department of investment development of the Smolensk Region**

tel./fax: +7 (4812) 20-55-39, тел: +7 (4812) 20-55-32,  
e-mail: [dirsmol@gmail.com](mailto:dirsmol@gmail.com),  
e-mail: [invest@admin-smolensk.ru](mailto:invest@admin-smolensk.ru)

**Corporation of investment development of the Smolensk Region**

tel: +7 (4812) 77-00-22, e-mail: [smolregion67@yandex.ru](mailto:smolregion67@yandex.ru)

**Smolensk Fund for support of entrepreneurship**

tel: +7 (4812) 77-70-77, 61-05-09, e-mail: [sofpmp@rambler.ru](mailto:sofpmp@rambler.ru)  
[www.sofpmp.ru](http://www.sofpmp.ru)

**Smolensk Chamber of Commerce**

tel: +7 (4812) 38-74-50, 38-29-57,  
e-mail: [info@smolenskcci.ru](mailto:info@smolenskcci.ru),  
[www.smolenskcci.ru](http://www.smolenskcci.ru)

**Regional Integrated Centre (RIC) - Smolensk Region**

tel./fax: +7 (4812) 38-29-57, 32-83-14, 38-74-32,  
e-mail: [expo1@smolenskcci.ru](mailto:expo1@smolenskcci.ru), [expo2@smolenskcci.ru](mailto:expo2@smolenskcci.ru)  
[www.eicc-smolensk.ru](http://www.eicc-smolensk.ru)

**Investment portal of the Smolensk Region**

[www.smolinvest.com](http://www.smolinvest.com)

