



Grünwald
Semitrailer manufacture



www.grunwald.ru



Grünwald
Semitrailer manufacture

Production of semitrailers

- The plant is located in the Kaliningrad Region.
- The first semitrailer was produced in 2007 year.
- It is the 5th best in output of semitrailers among Russian manufacturers at year-end 2013.
- It is the 2nd best in sales of dump semitrailers and container chassis semitrailers at present.

History



- 2007 year - the plant started its operation with production of container semitrailers and curtain-sided semitrailers.
- 2009 year – the production of dump semitrailers under brand Grünwald system Langendorf was launched
- 2010 year – Mounting of dumping superstructures on truck chassis is offered to the customers
- 2011 year – the plant was certified according to ISO 9001-2008
- 2012 year – the 1000th semitrailer was produced
- 2013 year – Grünwald gained 33% of new tipping semitrailer market in Russia.
- 2014 year – Grünwald started export to European Union



Grünwald
Semitrailer manufacture

Vehicles Produced



- Tipping semitrailers
- Tilt and curtain-sided semitrailers
- Container semitrailers
- Low-bed semitrailers
- Tilt and tipping superstructures for truck chassis

Dump semitrailers with Half-pipe body



- 27, 31, 34, 36, 38 and 50 cmb capacity

Tilt and curtain-sided semitrailers



Platform Semitrailer



Open-sided semitrailer



Tilt semitrailer



Curtain Semitrailer



Curtain-sided semitrailer



Grünwald
Semitrailer manufacture

Container Semitrailers



**Versatile Low-
Bed
Container
chassis**



**Heavy-Duty
container
chassis**



**Tank-container
chassis**



Grünwald
Semitrailer manufacture

Chassis Superstructures



Dumping Superstructures



Curtain-Sided Superstructures

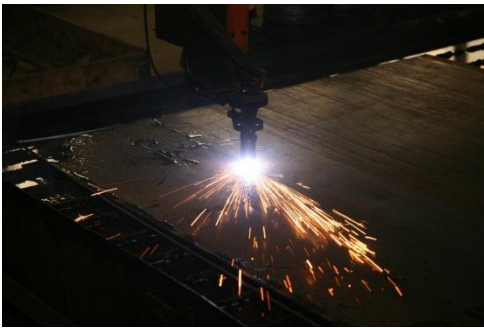


Grünwald
Semitrailer manufacture

Production engineering

- The line-haul vehicles were designed in cooperation with German design engineers
- Dump semitrailers and bodies are produced according to the technology of one of the oldest semitrailer manufacturers in Europe – Langendorf company
- Design is being continuously advanced to increase reliability and extend vehicles' service life.

Section One

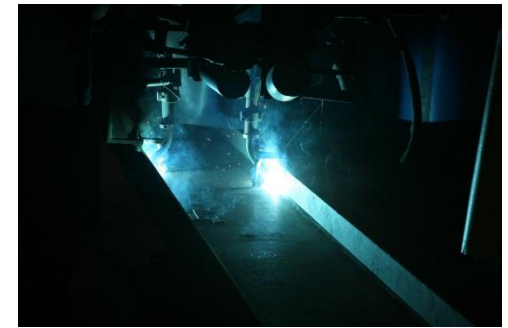


- Preparation of Steel Parts
- Metal cutting and bending is performed by CNC machine tool



Grünwald
Semitrailer manufacture

Section Two



- Assembly and welding of frames and bodies
- Most welding works are executed with automatic and semiautomatic argon welding machines
- The equipment and consumables are supplied by European manufacturers

Section Three



- All steel parts are subjected to double shot-blasting
- Prior to painting, they are coated by zinc-containing primer
- Painting is carried out using state-of-the-art industrial equipment
- The paint coating quality meets ISO standard for severe climatic conditions

Section Four



- Semitrailer Assembly
- Installation of axle units
- Adjustment of ABS/EBS
- Final inspection by QC department



Grünwald
Semitrailer manufacture

Quality Improvement

- Documented quality control at each production stage
- Engineering design changes based on users' feedback
- Use of high-quality component parts from the attested vendors
- Quality Management System Certificate ISO 9001-2008
- The work on implementation of Kaizen philosophy is in progress.



Grünwald
Semitrailer manufacture

Components



WABCO



OVAKO





Grünwald
Semitrailer manufacture

Advantages of Grünwald

- European product quality
- Original European components
- Adapted in line with rough road conditions
- Reinforced frame design
- Reinforced axles and suspension
- High-quality paint coating for severe climatic conditions



Grünwald
Semitrailer manufacture

Thank you for your attention.

www.grunwald.ru